

AGENDA

PARKS & RECREATION COMMISSION

September 10, 2025

Hybrid Meeting In-person and via Zoom



Join Zoom Meeting

<https://us02web.zoom.us/j/84625594627?pwd=sOZgYfOerz6zMDFN2br637I0loPONW.1>

Meeting ID: 846 2559 4627

Passcode: 468762

Accessibility

The City of Ellensburg strives to make our services, programs, and activities readily accessible.

- Closed Captioning is available to Zoom viewers. To enable closed captioning, you will need to click on the "CC" button at the bottom of your Zoom screen and then select either "Show Subtitle" or "View Full Transcript."
- Members of the public who do not speak English or who have limited proficiency may request an interpreter if they wish to participate in public meetings.
- The City will provide reasonable accommodation for members of the public with disabilities.

Please submit requests for language assistance or reasonable accommodation to the HR Director/ADA Coordinator by calling (509) 962-7222 or by email at ADACoordinator@ellensburgwa.gov. Five (5) business days' notice is appreciated.

**CITY OF ELLENSBURG
PARKS & RECREATION COMMISSION AGENDA
Council Chambers
501 North Anderson Street
Ellensburg, WA 98926
And remotely via Zoom
Wednesday, September 10, 2025
5:30 PM - Regular Meeting**

1. Approval of Minutes

- 1.A Approval of Minutes from August 13, 2025 Parks & Recreation Commission meeting

2. New Business

- 2.A EPiC Pickleball Court Improvements
2.B Kittitas Environmental Education Network – EcoExplorers Club
2.C Ellensburg Area Swim Team Storage Request
2.D Rotary Park Miniature Railroad
2.E Kiwanis Park Basketball Court Project
2.F Six Capital Improvement Schedule

3. Unfinished Business

4. Citizen Comment

5. Staff Update/Discussion Items

6. Member Updates

7. Staff Reports

8. Adjournment

Guidelines for Citizen Comments on Non-Agenda Items and Public Comments:

Purpose: Allow the public to address the Commission on subjects not on the regular Agenda at this particular meeting. Comments must concern the City's business or a matter over which the commission has control.

Procedure for Public Participation:

- When recognized, please state your name, and the subject to be discussed.
- 3 minute time limit for citizen comment on non-agenda items (without interruption). Commission will not act on issue. 5 minute time limit for the introduction of new business items, unless extended by a majority of Commission members present.

- Submit written comments to Staff representative.
- Speakers are cautioned not to make comments of a personal, impertinent or derogatory nature.
- The Commission does not take action at the meeting at which a subject is first introduced during the public comment period. You may wish to concisely state your concern and request placement of your matter on a future agenda.
- On agenda items each speaker's comments will be limited to 3 minutes.



For more information on the Ellensburg Parks and Recreation Commission, contact Parks and Recreation Director Brad Case at 509-925-8639.

The Contents of this agenda have been photocopied on recycled paper.

**Parks & Recreation Advisory Commission
Meeting Minutes – August 13, 2025**

DATE OF MEETING: August 13, 2025
MEMBERS PRESENT: Nikki Pollock, Frana Milan, Ron Parga, Charlie Smith, Devin Shea (remote), Casey Fiske
OTHERS PRESENT: Council Liaison Beauchamp, Parks & Recreation Director Case, 3 members from the public
LOCATION: Meeting was held in the Council Chambers and Virtually

CALL TO ORDER – Meeting called to order at 5:35pm

MEETING MINUTES – Minutes from the July 9, 2025 meeting were approved.

CITIZEN COMMENT ON NON-AGENDA ITEMS

Community members spoke about the 2016 comp plan and the need for a long-term plan at the Kittitas Valley Memorial Pool & Fitness Center.

NEW BUSINESS

2026 Project Priority Discussion – In November 2025, city staff will be bringing forward to City Council amendments to the 2026 budget. Included in those recommendations will be a request to reallocate \$302,800.00 budgeted in the 2025 'Park Acquisition and Development Fund' for new playground equipment or a splash pad. The \$302,800.00 reflects the city's match for a Recreation and Conversation Office grant the city applied for to build 8 tennis courts at Mt. View Park. The tennis court project fell outside the funding level, there was \$42,026,964 in project requests with only \$10,414,382 approved in the Capital Budget. Staff requested a recommendation from the Commission on which project, the splash pad or playground(s) should be funded. Staff also shared with the Commission that these funds weren't eligible for the sloped roof repair at the Kittitas Valley Memorial Pool & Fitness Center however the city had identified another funding source for that project.

Staff provided the Commission with examples of playground equipment that would cost close to \$300,000.00 to purchase and install as well as a \$300,000.00 splash pad.

A motion was made and seconded to use money for a splash pad North Alder Street Park. All in favor.

Community Outreach Events for Park Plan Update – Staff reviewed the pop-up boards created by MIG that will be used for public outreach events and shared the schedule of events and available volunteer opportunities.

Park Partnership Program Review – Staff provided the Commission with an overview of the park partnership program and evaluation process. With three new members on the Commission, staff thought it was important to provide a history of the program and how projects

are selected. The application process is currently open through the end of August, staff will be taking the applications to the commission at their September 10th meeting for their recommendations.

COMMISSION MEMBER REPORTS

Commissioner members talked about off leash parks and fishing at Irene Rinehart Riverfront Park.

STAFF REPORTS

Staff reported the following: 1. City staff is putting together contracts to start the repair work on the KVMP flat roof and HVAC. 2. "Harmonize" the new sculpture at Unity Park was unveiled on August 1st. 3. The Wall That Heals, a traveling $\frac{3}{4}$ scale replica of the Vietnam Memorial, will be at Rotary Park September 4-7, 2025. 4. City is looking at new garbage cans for the central business district, funding would come from Lodging Tax.

Meeting was adjourned at 7pm.

Park Partnership Program Rating Form

Project Name:

Reviewer:

Date:

Item	Category (Highlights for each category listed in the bullets)	Points allowed	Points Awarded	Comments
1	Project Description Proposal Introduction. Did the applicant provide a clear understanding of the proposed budget?	{5}		
		Section Total		
2	Project Benefit Does the project address a particular need? Is the preoject appropriate for the location/park?	{25}		
		Section Total		
3	Maintenance Has the applicant considered the mainteance and future costs associated with the project?	{25}		
		Section Total		
4	Group/Individuals Qualifications Applicant identified team members and roles Experience on similar projects. Does the applicant have qualified people performing the work?	{20}		
		Section Total		
5	Work Plan Does the proposal clearly define applicants approach to completing the objectives and tasks outlined in the scope of their proposal? Does the applicant have a clear understanding of the proposed project?	{20}		
		Section Total		
6	Budget Does the applicant have realistic budget?	{5}		
	Total Score			

Project Title: KEEN EcoExplorers Afterschool Club

Applicant Organization: Kittitas Environmental Education Network (KEEN), a 501(c)(3) nonprofit
Contact: Jill Scheffer, Executive Director | jillscheffer@keenetwork.org | (509) [551-8807]

Locations: The club will meet at KEEN's downtown office at 115 East 4th in the conference room and then travel to local parks like Helen McCabe Park (5 miles south of Ellensburg), and Ellensburg City Parks including Paul Rogers Park and Irene Reinhart Riverfront Park primarily.

Project Description:

The KEEN EcoExplorers Club is a new afterschool program designed to provide Ellensburg middle school students with safe, structured, and enriching experiences in the outdoors. Meeting every Wednesday from 1:00–5:00 PM on early release days, EcoExplorers uses City parks as outdoor classrooms where students engage in hands-on science, art, and stewardship projects that connect them to their local environment.

Each week, students will explore themes such as ecosystems and biodiversity, water and watersheds, climate and energy, and native plants and cultural connections. Activities include water quality testing at Irene Rinehart Riverfront Park, pollinator habitat creation in community green spaces, and nature journaling at Rotary Park. All programming is aligned with Washington State Environmental & Sustainability Education Standards, ensuring a strong educational foundation that complements school-day learning.

The program directly addresses a critical need in the community: safe, supervised activities for middle school students during early release hours, when many parents are still at work and students may otherwise be unsupervised. By providing transportation, scholarships, and structured enrichment, KEEN ensures that all students—regardless of family income or access to transportation—can participate.

EcoExplorers also benefits the broader community by fostering stewardship of City parks and open spaces. Students actively care for local environments, contributing to native planting, park clean-ups, and citizen science projects that improve ecological health and strengthen the community's connection to public spaces.

Through EcoExplorers, Ellensburg youth will gain:

- Safe, consistent, and supervised afterschool programming
- Real-world science and environmental education experiences
- Leadership, teamwork, and problem-solving skills

- A sense of pride and ownership in maintaining and improving City parks

The KEEN EcoExplorers Club strengthens both youth wellbeing and the health of Ellensburg's parks, making it a true partnership between the City, families, and KEEN to enhance quality of life for the entire community.

Project Summary:

KEEN is requesting \$4,250.00 in support from the City of Ellensburg in support of the KEEN EcoExplorers Club. A Wednesday afterschool program for Ellensburg middle school students that uses City parks as outdoor classrooms for hands-on, project-based environmental education. Running from 1–5 PM on early release Wednesdays, EcoExplorers engages students in real-world science, stewardship, and leadership activities aligned with Washington State Environmental & Sustainability Education Standards. A total of 12 students can enroll in the program. This limitation is in place because we have one program leader and a maximum 15-seat bus for transportation.

Weekly Experiences Include:

- Nature hikes and ecosystem exploration
- Science experiments and water testing
- Climate and conservation challenges
- Nature art, mapping, and storytelling
- Stewardship projects that matter

What's Provided:

- Transportation from schools
- All gear and materials
- Healthy snacks
- Expert educator leadership

Funds from the Park Partnership Program will be used to provide support for program staffing and supplies and to cover transportation costs using KEEN's bus for transport to and from City of Ellensburg Parks. This project supports community use of City parks, builds environmental literacy, and fosters the next generation of park stewards.

Community Benefits

The KEEN EcoExplorers Club will provide multiple, lasting benefits to the Ellensburg community including:

1. Youth Safety and Enrichment

- On early release Wednesdays, many middle school students have unsupervised hours before parents finish work. This gap in safe, structured programming can put youth at risk of social isolation, excessive screen time, or unsafe activities.
- EcoExplorers provides a supervised, positive, and enriching alternative, giving students a safe place to go after school.
- The program supports working families by reducing the childcare burden and ensuring youth have healthy, constructive ways to spend their time.

2. Environmental Education and Stewardship

- Students engage in hands-on, project-based learning rooted in Ellensburg’s local ecosystems, connecting them to the Yakima River, shrub-steppe landscapes, and City parks.
- The curriculum aligns with Washington’s Environmental and Sustainability Education Standards, building skills in systems thinking, problem-solving, and environmental literacy.
- Students can participate in real stewardship projects such as planting native species, conducting waste audits, and monitoring water quality, which directly benefit City parks and open spaces.
- By developing an understanding of local environmental challenges, students are empowered to become the next generation of stewards for Ellensburg’s parks and natural areas.

3. Equity and Access

- Low program costs ensure that all families can participate, regardless of financial situation.
- KEEN’s bus transportation removes barriers for families who may not have reliable afterschool transit options.

4. Alignment with the Ellensburg Parks, Recreation, and Open Space (PROS) Plan 2016

- The EcoExplorers program directly supports PROS Plan goals, particularly **Meet community needs with quality programs & Encourage active, healthy lifestyles.** EcoExplorers creates a new, structured recreation option for middle school youth during a time when they often have unstructured or electronic-based focus.

5. Community Wellbeing

- The program fosters teamwork, leadership, and belonging for middle school students.
- EcoExplorers strengthens the community’s connection to City parks, helping residents see parks as places for learning, recreation, and stewardship.
- Families, teachers, and community members will be invited to a year-end EcoExplorers Showcase at a City Parks Commission meeting, where students share what they’ve learned and accomplished, celebrating the role of parks in supporting education and wellbeing.

Work Plan:

KEEN’s goal is always to keep program funding low. KEEN applied for funding from a state source that was eliminated this July. This state source would have fully funded our EcoExplorers program and would also have supported our 4th Grade Outdoor School Program, Envirosleuths.

Due to City of Ellensburg funding timelines, EcoExplorers will begin as KEEN planned in September 2025. Until the City approves funding, KEEN will be running the program at a loss. Tuition costs for the club membership are \$100/month per student. If City Parks Partnership Funding is approved, KEEN will be able to continue the program through to June 2026. If City funding is not approved, KEEN will have to end the program by December 2025 as tuition costs are not enough to cover program expenses.

Step	Activity	Responsible Party	Start Date	Completion Date
1	Recruit and train EcoExplorers educator	KEEN staff	June 2025	Sept 2025
2	Announce and market program & program registration	KEEN staff	July 2025	Sept 2025 and ongoing
4	Launch weekly EcoExplorers program	KEEN educator	Sept 10, 2025	Ongoing
5	Program delivery	KEEN educator	Sept 2025	Sept 2025-June 2026
6	End-of-year student showcase at Parks & Recreation Commission meeting	KEEN staff & families		June 2026, pending availability of commission

Step	Activity	Responsible Party	Start Date	Completion Date
7	Final evaluation and reporting to City	KEEN staff		July 2026

Budget Plan

Expenses:

- Transportation (fuel, insurance, maintenance for KEEN bus): **\$1,500**
- Teacher leader (8hrs/weekx36/hrx30weeks): **\$8640.00**
- Program supplies (journals, science kits, art materials): **\$1,000**
- Snacks and safety gear: **\$800**
- Insurance and overhead: **\$1,500.00**
- **Total Project Cost: \$13,440.00**

Funding Request (City): \$4,250.00

Applicant Match (In-kind + cash): \$28,543.70

- KEEN staff time (planning & coordination): **\$16,500.00**
- Volunteer support – subject area experts (valued at \$34.79/hr x ~30 hrs): **\$1,043.70**
- Program tuition (estimate 10 kids x \$100 x 9 months): **\$11,000.00**

Maintenance & Operations

The EcoExplorers program is operated and maintained by KEEN. All program supplies, staffing, and liability are managed by KEEN. The program uses existing park facilities with no new infrastructure required, minimizing maintenance burden to the City.

Community Support

KEEN has a 25-year history of providing environmental education programs in Kittitas County. During the COVID-19 pandemic and shut-down, KEEN operated our Windy City Park Explorers program providing safe outdoor child care, environmental activities, and fun for kids K through 5 all summer in 4 City Parks and through the online school year when kids were only back in school part time. For the past several years, KEEN has worked with the Ellensburg School District to provide Envirosleuths 4th Grade Outdoor School to all fourth graders in the district. And for the last 11 years, KEEN has provided summer camp experiences through our Pond to Pines and Mountaineers programs to hundreds of K-10th graders. Our record for providing programs that advance educational goals and meet community needs are unparalleled. Our new program director for EcoExplorers is a local tutor with a background in biology, math, and teaching. His passion for the program and for working with middle-school students to extend and expand their school-based learning is unmatched. Demand from families for affordable, safe, afterschool outdoor programming continues to grow, and the EcoExplorers Club directly meets this need.

Appropriate Location

EcoExplorers will utilize existing City parks that are accessible, safe, and suited for outdoor learning. Locations such as Irene Rinehart Riverfront Park provide excellent opportunities for water quality monitoring, habitat study, and stewardship projects. KEEN will coordinate with City Parks staff to ensure alignment with park use guidelines.

Lesson Plan: Ecosystems and Biodiversity

Grade Level: Middle School

Duration: 1:00–5:00 PM

Topic Focus: Food webs, trophic levels, native species of Kittitas County, and real-world ecological applications.

1:00–1:30 PM | Arrival, Snacks, and Introductions

- **Objective:** Settle in, build rapport, and prepare students for the lesson.
- **Activities:**
 - Students arrive and grab snacks.
 - Light introductions and overview of the day's goals.

Teacher Note: *Confirm if snacks are provided or if you need to bring them.*

1:30–2:30 PM | Trophic Levels Lesson + Food Web Roleplay

1:30–2:00 PM | Mini-Lesson: Understanding the Food Chain

- **Objective:** Introduce the four main trophic levels:
 - **Primary Producers**
 - **Primary Consumers**
 - **Secondary Consumers**
 - **Tertiary Consumers**
- **Student Tasks:**
 - Set up notebook pages: **Name, Date, and Title: “Ecosystems and Biodiversity”**
 - Take notes on each level, guided by examples from Kittitas County.

2:00–2:30 PM | Interactive Activity: Food Web Roleplay

- **Objective:** Reinforce food web concepts through group collaboration and movement.
 - **Materials:**
 - Cards in a hat (each card has an organism or trophic level label)
 - Whiteboard or poster paper
 - **How it works:**
 - Students draw cards and take turns adding their organism to a growing food web diagram.
 - Use arrows to show who eats whom.
 - Students form **two groups of five** (if class size is 10) and build two different food webs.
 - **Outcome:** A completed, large-scale food web on the board with student participation.
-

2:30–3:30 PM | Independent Project: Native Species Food Web

- **Objective:** Students create individual food webs using real native species from Kittitas County.
 - **Materials Needed:**
 - Printed “Food Web: Kittitas County” handout (separate resource)
 - Colored pencils or markers
 - Food web examples (optional visual aids)
 - **Student Task:**
 - Use the provided resource list to select native producers, consumers, and predators.
 - Create their own **hand-drawn food web in their journals**, labeling each organism with its common and scientific name.
-

3:30–4:15 PM | Application & Extension: Real-World Ecology

Part A: Project Completion Support

- Students who need more time finish their food webs.

Part B: Ecologist Tools or Case Study (for early finishers)

- **Goal:** Demonstrate how ecologists apply knowledge of ecosystems to real-world problems.
- **Options based on student progress:**
 - **If many students finish:**
 - Conduct a **class discussion** using the **case study:**
[“Shrub-Steppe Birds of Kittitas County”](#)
(teacher will print and summarize)
 - **If few students finish:**
 - Continue food web work.
 - Provide **extension reading on land bridges** to early finishers.
 - Optional: Introduce a scientific tool or method used in ecology (e.g., wildlife tracking, drone mapping, camera traps).

Teacher Note: Consider preparing a short overview or diagram of how habitat fragmentation impacts species for the case study discussion.

🕒 4:15–5:00 PM | Reflection Circle + Parent Pickup

- **Objective:** Encourage students to process and express what they learned.
 - **Discussion Prompts:**
 - “What was something new you learned today?”
 - “What’s one thing you’re still curious about?”
 - “What would you do to protect the ecosystem if you were an ecologist?”
 - Open time for packing up, parent pick-up, and one-on-one student questions.
-

✅ Materials Checklist

- Printed cards with trophic level organisms
- Poster board or whiteboard + markers
- Food web handouts (Kittitas County version)
- Colored pencils/markers
- Printed copy of case study (for teacher)
- Optional: Land bridge reading or ecology tool activity sheet

Build Your Own Food Web: Life in Kittitas County

Name: _____ Date: _____

Your Mission:

Create a **food web** using real plants and animals from the shrub-steppe ecosystem of **Kittitas County**. You'll learn how energy flows from the sun to top predators—and you'll get to design your own web of life!

Step 1: Get to Know the Players

Below are some organisms from different **trophic levels** (positions in the food chain). Choose **at least 3 producers, 3 primary consumers, 2 secondary consumers, and 1 tertiary consumer** for your food web.

Producers (They make their own food using sunlight)

Choose 3

- Sagebrush – *Artemisia tridentata*
- Bitterbrush – *Purshia tridentata*
- Rabbitbrush – *Chrysothamnus nauseosus*
- Bluebunch Wheatgrass – *Pseudoroegneria spicata*
- Lupine – *Lupinus spp.*
- Balsamoroot – *Balsamorhiza sagittata*

Primary Consumers (They eat plants)

Choose 3

- Mule Deer – *Odocoileus hemionus*
- Pygmy Rabbit – *Brachylagus idahoensis*
- Ground Squirrel – *Uroditellus spp.*
- Grasshopper – *Orthoptera*
- Sage Grouse – *Centrocercus urophasianus*

Secondary Consumers (They eat the herbivores)

Choose 2

- Bobcat – *Lynx rufus*
- Badger – *Taxidea taxus*
- Western Rattlesnake – *Crotalus oreganus*
- Weasel – *Mustela spp.*

Tertiary Consumers (Top predators)

Choose 1

- Cougar – *Puma concolor*
- Golden Eagle – *Aquila chrysaetos*
- Great Horned Owl – *Bubo virginianus*

Step 2: Plan Your Web

On the back of this sheet or on scratch paper, list the organisms you chose and draw arrows from **what gets eaten** → to **who eats it**.

 **Remember:** Arrows show the direction energy flows (from food to eater)!

Step 3: Draw Your Food Web!

On the next page (or use a big blank sheet), create your **Kittitas County Food Web**.

Tips for Drawing:

- ✓ Put the **producers at the bottom**.
- ✓ Stack the levels like a pyramid (herbivores above, then carnivores).
- ✓ Use **arrows** to show who eats whom.
- ✓ Label each organism with both its **common name and scientific name**.
- ✓ Be creative! Add colors, backgrounds, or fun facts.

Bonus Challenge (Optional):

Can you add one **omnivore** (an animal that eats both plants and animals) to your food web?
Label it and show how it fits

 **Wrap-Up Questions (write your answers below):**

1. What would happen to your food web if sagebrush disappeared?
2. Why are producers so important in an ecosystem?
3. Which animal in your food web is most dependent on others for survival? Explain.

Breaking Up Nature: How Roads and Buildings Affect Wildlife


Have you ever driven down a highway and seen forests on both sides? It might seem like nature is all around, but something important is missing—connection.

Ecologists (scientists who study ecosystems) have a name for this problem: habitat fragmentation. That means when large natural areas—like forests, wetlands, or grasslands—are broken into smaller pieces by human activities. These activities include building roads, cities, and farms. The natural system gets chopped up, and that causes problems for the animals and plants that live there.

Imagine you're a deer, and your forest is cut in half by a highway. Now it's hard to find food, water, or other deer to start a family with. You might try to cross the road, but that's dangerous. Many animals are hurt or killed trying to cross roads. Some stop moving altogether, stuck in smaller spaces where it's harder to survive. When parts of an ecosystem can't work together anymore, the whole system becomes weaker.

So what can ecologists do?

 They track animals with GPS collars to learn how they move and where they get stuck.

 They design wildlife corridors, like special bridges or tunnels, that let animals safely cross roads and reconnect with other parts of their habitat.

 They collect data to understand which species are at risk and share that information with people who plan cities, roads, and parks.

By studying natural systems and how they change, ecologists help protect wildlife and keep ecosystems healthy—even in a world full of roads and people.

💬 Class Discussion Questions

1. Why is it a problem when habitats get broken into smaller pieces? Can you think of any examples near where we live?
2. What does it mean that nature is a "system"? How does one small change (like a road) affect the whole system?
3. What are some examples of how animals and plants depend on each other to survive?
4. How do wildlife corridors help solve the problem of habitat fragmentation? Do you think they are a good solution? Why or why not?
5. If you were an ecologist, what would you do to help solve the problem of habitat fragmentation in your community?
6. Can you think of any examples of Habitat Fragmentation in Kittitas County?

Primary Producers (10 cards)

Common Name	Scientific Name	Image
Sunflower	<i>Helianthus annuus</i>	
Oak tree	<i>Quercus spp.</i>	
Grass	<i>Poaceae family</i>	
Algae	<i>Chlorophyta</i>	
Cactus	<i>Cactaceae family</i>	
Fern	<i>Polypodiopsida</i>	
Pine tree	<i>Pinus spp.</i>	
Apple tree	<i>Malus domestica</i>	
Moss	<i>Bryophyta</i>	
Clover	<i>Trifolium spp.</i>	

Primary Consumers (10 cards)

Common Name	Scientific Name	Image
Rabbit	<i>Oryctolagus cuniculus</i>	
Deer	<i>Odocoileus spp.</i>	
Grasshopper	<i>Orthoptera</i>	
Cow	<i>Bos taurus</i>	
Caterpillar	<i>Lepidoptera larvae</i>	
Sheep	<i>Ovis aries</i>	
Goat	<i>Capra aegagrus</i>	
Mouse	<i>Mus musculus</i>	

Panda *Ailuropoda melanoleuca*

Koala *Phascolarctos cinereus*

Secondary Consumers (10 cards)

Common Name	Scientific Name	Image
Frog	<i>Anura order</i>	
Fox	<i>Vulpes vulpes</i>	
Snake	<i>Serpentes order</i>	
Owl	<i>Strigiformes order</i>	
Spider	<i>Araneae order</i>	
Skunk	<i>Mephitis mephitis</i>	
Raccoon	<i>Procyon lotor</i>	
Coyote	<i>Canis latrans</i>	
Lizard	<i>Squamata order</i>	
Toad	<i>Bufo family</i>	

Tertiary Consumers (10 cards)

Common Name	Scientific Name	Image
Eagle	<i>Aquila spp.</i>	
Shark	<i>Selachimorpha</i>	
Lion	<i>Panthera leo</i>	
Orca	<i>Orcinus orca</i>	
Polar Bear	<i>Ursus maritimus</i>	
Crocodile	<i>Crocodylus spp.</i>	

Hawk	<i>Accipitridae family</i>
Mountain Lion	<i>Puma concolor</i>
Great White Shark	<i>Carcharodon carcharias</i>
Human	<i>Homo sapiens</i>

ECO-EXPLORERS CLUB



Join KEEN's new **EcoExplorers Club**—an exciting weekly adventure filled with outdoor science, environmental projects, and creative discovery. Aligned with WA State ESE Standards, this hands-on program builds real-world skills and nature connection.

6th-8th Grade After School Club!

- Get Outside w/ Hands-On Learning
- Build Future Eco Leaders
- Real Science & Team Projects
- Explore Local Parks
- Creative Adventures



SEPT-JUNE

**Wednesdays 1pm-5pm
@KEEN**

Register:

keen-ycic.org/ecoexplorers

Questions? 509-551-8807



Project Title: KEEN EcoExplorers Afterschool Club

Applicant Organization: Kittitas Environmental Education Network (KEEN), a 501(c)(3) nonprofit
Contact: Jill Scheffer, Executive Director | jillscheffer@keenetwork.org | (509) [551-8807]

Locations: The club will meet at KEEN's downtown office at 115 East 4th in the conference room and then travel to local parks like Helen McCabe Park (5 miles south of Ellensburg), and Ellensburg City Parks including Paul Rogers Park and Irene Reinhart Riverfront Park primarily.

Project Description:

The KEEN EcoExplorers Club is a new afterschool program designed to provide Ellensburg middle school students with safe, structured, and enriching experiences in the outdoors. Meeting every Wednesday from 1:00–5:00 PM on early release days, EcoExplorers uses City parks as outdoor classrooms where students engage in hands-on science, art, and stewardship projects that connect them to their local environment.

Each week, students will explore themes such as ecosystems and biodiversity, water and watersheds, climate and energy, and native plants and cultural connections. Activities include water quality testing at Irene Rinehart Riverfront Park, pollinator habitat creation in community green spaces, and nature journaling at Rotary Park. All programming is aligned with Washington State Environmental & Sustainability Education Standards, ensuring a strong educational foundation that complements school-day learning.

The program directly addresses a critical need in the community: safe, supervised activities for middle school students during early release hours, when many parents are still at work and students may otherwise be unsupervised. By providing transportation, scholarships, and structured enrichment, KEEN ensures that all students—regardless of family income or access to transportation—can participate.

EcoExplorers also benefits the broader community by fostering stewardship of City parks and open spaces. Students actively care for local environments, contributing to native planting, park clean-ups, and citizen science projects that improve ecological health and strengthen the community's connection to public spaces.

Through EcoExplorers, Ellensburg youth will gain:

- Safe, consistent, and supervised afterschool programming
- Real-world science and environmental education experiences
- Leadership, teamwork, and problem-solving skills

- A sense of pride and ownership in maintaining and improving City parks

The KEEN EcoExplorers Club strengthens both youth wellbeing and the health of Ellensburg's parks, making it a true partnership between the City, families, and KEEN to enhance quality of life for the entire community.

Project Summary:

KEEN is requesting \$4,250.00 in support from the City of Ellensburg in support of the KEEN EcoExplorers Club. A Wednesday afterschool program for Ellensburg middle school students that uses City parks as outdoor classrooms for hands-on, project-based environmental education. Running from 1–5 PM on early release Wednesdays, EcoExplorers engages students in real-world science, stewardship, and leadership activities aligned with Washington State Environmental & Sustainability Education Standards. A total of 12 students can enroll in the program. This limitation is in place because we have one program leader and a maximum 15-seat bus for transportation.

Weekly Experiences Include:

- Nature hikes and ecosystem exploration
- Science experiments and water testing
- Climate and conservation challenges
- Nature art, mapping, and storytelling
- Stewardship projects that matter

What's Provided:

- Transportation from schools
- All gear and materials
- Healthy snacks
- Expert educator leadership

Funds from the Park Partnership Program will be used to provide support for program staffing and supplies and to cover transportation costs using KEEN's bus for transport to and from City of Ellensburg Parks. This project supports community use of City parks, builds environmental literacy, and fosters the next generation of park stewards.

Community Benefits

The KEEN EcoExplorers Club will provide multiple, lasting benefits to the Ellensburg community including:

1. Youth Safety and Enrichment

- On early release Wednesdays, many middle school students have unsupervised hours before parents finish work. This gap in safe, structured programming can put youth at risk of social isolation, excessive screen time, or unsafe activities.
- EcoExplorers provides a supervised, positive, and enriching alternative, giving students a safe place to go after school.
- The program supports working families by reducing the childcare burden and ensuring youth have healthy, constructive ways to spend their time.

2. Environmental Education and Stewardship

- Students engage in hands-on, project-based learning rooted in Ellensburg’s local ecosystems, connecting them to the Yakima River, shrub-steppe landscapes, and City parks.
- The curriculum aligns with Washington’s Environmental and Sustainability Education Standards, building skills in systems thinking, problem-solving, and environmental literacy.
- Students can participate in real stewardship projects such as planting native species, conducting waste audits, and monitoring water quality, which directly benefit City parks and open spaces.
- By developing an understanding of local environmental challenges, students are empowered to become the next generation of stewards for Ellensburg’s parks and natural areas.

3. Equity and Access

- Low program costs ensure that all families can participate, regardless of financial situation.
- KEEN’s bus transportation removes barriers for families who may not have reliable afterschool transit options.

4. Alignment with the Ellensburg Parks, Recreation, and Open Space (PROS) Plan 2016

- The EcoExplorers program directly supports PROS Plan goals, particularly **Meet community needs with quality programs & Encourage active, healthy lifestyles.** EcoExplorers creates a new, structured recreation option for middle school youth during a time when they often have unstructured or electronic-based focus.

5. Community Wellbeing

- The program fosters teamwork, leadership, and belonging for middle school students.
- EcoExplorers strengthens the community’s connection to City parks, helping residents see parks as places for learning, recreation, and stewardship.
- Families, teachers, and community members will be invited to a year-end EcoExplorers Showcase at a City Parks Commission meeting, where students share what they’ve learned and accomplished, celebrating the role of parks in supporting education and wellbeing.

Work Plan:

KEEN’s goal is always to keep program funding low. KEEN applied for funding from a state source that was eliminated this July. This state source would have fully funded our EcoExplorers program and would also have supported our 4th Grade Outdoor School Program, Envirosleuths.

Due to City of Ellensburg funding timelines, EcoExplorers will begin as KEEN planned in September 2025. Until the City approves funding, KEEN will be running the program at a loss. Tuition costs for the club membership are \$100/month per student. If City Parks Partnership Funding is approved, KEEN will be able to continue the program through to June 2026. If City funding is not approved, KEEN will have to end the program by December 2025 as tuition costs are not enough to cover program expenses.

Step	Activity	Responsible Party	Start Date	Completion Date
1	Recruit and train EcoExplorers educator	KEEN staff	June 2025	Sept 2025
2	Announce and market program & program registration	KEEN staff	July 2025	Sept 2025 and ongoing
4	Launch weekly EcoExplorers program	KEEN educator	Sept 10, 2025	Ongoing
5	Program delivery	KEEN educator	Sept 2025	Sept 2025-June 2026
6	End-of-year student showcase at Parks & Recreation Commission meeting	KEEN staff & families		June 2026, pending availability of commission

Step	Activity	Responsible Party	Start Date	Completion Date
7	Final evaluation and reporting to City	KEEN staff		July 2026

Budget Plan

Expenses:

- Transportation (fuel, insurance, maintenance for KEEN bus): **\$1,500**
- Teacher leader (8hrs/weekx36/hrx30weeks): **\$8640.00**
- Program supplies (journals, science kits, art materials): **\$1,000**
- Snacks and safety gear: **\$800**
- Insurance and overhead: **\$1,500.00**
- **Total Project Cost: \$13,440.00**

Funding Request (City): \$4,250.00

Applicant Match (In-kind + cash): \$28,543.70

- KEEN staff time (planning & coordination): **\$16,500.00**
- Volunteer support – subject area experts (valued at \$34.79/hr x ~30 hrs): **\$1,043.70**
- Program tuition (estimate 10 kids x \$100 x 9 months): **\$11,000.00**

Maintenance & Operations

The EcoExplorers program is operated and maintained by KEEN. All program supplies, staffing, and liability are managed by KEEN. The program uses existing park facilities with no new infrastructure required, minimizing maintenance burden to the City.

Community Support

KEEN has a 25-year history of providing environmental education programs in Kittitas County. During the COVID-19 pandemic and shut-down, KEEN operated our Windy City Park Explorers program providing safe outdoor child care, environmental activities, and fun for kids K through 5 all summer in 4 City Parks and through the online school year when kids were only back in school part time. For the past several years, KEEN has worked with the Ellensburg School District to provide Envirosleuths 4th Grade Outdoor School to all fourth graders in the district. And for the last 11 years, KEEN has provided summer camp experiences through our Pond to Pines and Mountaineers programs to hundreds of K-10th graders. Our record for providing programs that advance educational goals and meet community needs are unparalleled. Our new program director for EcoExplorers is a local tutor with a background in biology, math, and teaching. His passion for the program and for working with middle-school students to extend and expand their school-based learning is unmatched. Demand from families for affordable, safe, afterschool outdoor programming continues to grow, and the EcoExplorers Club directly meets this need.

Appropriate Location

EcoExplorers will utilize existing City parks that are accessible, safe, and suited for outdoor learning. Locations such as Irene Rinehart Riverfront Park provide excellent opportunities for water quality monitoring, habitat study, and stewardship projects. KEEN will coordinate with City Parks staff to ensure alignment with park use guidelines.

Lesson Plan: Ecosystems and Biodiversity

Grade Level: Middle School

Duration: 1:00–5:00 PM

Topic Focus: Food webs, trophic levels, native species of Kittitas County, and real-world ecological applications.

1:00–1:30 PM | Arrival, Snacks, and Introductions

- **Objective:** Settle in, build rapport, and prepare students for the lesson.
- **Activities:**
 - Students arrive and grab snacks.
 - Light introductions and overview of the day's goals.

Teacher Note: *Confirm if snacks are provided or if you need to bring them.*

1:30–2:30 PM | Trophic Levels Lesson + Food Web Roleplay

1:30–2:00 PM | Mini-Lesson: Understanding the Food Chain

- **Objective:** Introduce the four main trophic levels:
 - **Primary Producers**
 - **Primary Consumers**
 - **Secondary Consumers**
 - **Tertiary Consumers**
- **Student Tasks:**
 - Set up notebook pages: **Name, Date, and Title: “Ecosystems and Biodiversity”**
 - Take notes on each level, guided by examples from Kittitas County.

2:00–2:30 PM | Interactive Activity: Food Web Roleplay

- **Objective:** Reinforce food web concepts through group collaboration and movement.
 - **Materials:**
 - Cards in a hat (each card has an organism or trophic level label)
 - Whiteboard or poster paper
 - **How it works:**
 - Students draw cards and take turns adding their organism to a growing food web diagram.
 - Use arrows to show who eats whom.
 - Students form **two groups of five** (if class size is 10) and build two different food webs.
 - **Outcome:** A completed, large-scale food web on the board with student participation.
-

2:30–3:30 PM | Independent Project: Native Species Food Web

- **Objective:** Students create individual food webs using real native species from Kittitas County.
 - **Materials Needed:**
 - Printed “Food Web: Kittitas County” handout (separate resource)
 - Colored pencils or markers
 - Food web examples (optional visual aids)
 - **Student Task:**
 - Use the provided resource list to select native producers, consumers, and predators.
 - Create their own **hand-drawn food web in their journals**, labeling each organism with its common and scientific name.
-

3:30–4:15 PM | Application & Extension: Real-World Ecology

Part A: Project Completion Support

- Students who need more time finish their food webs.

Part B: Ecologist Tools or Case Study (for early finishers)

- **Goal:** Demonstrate how ecologists apply knowledge of ecosystems to real-world problems.
- **Options based on student progress:**
 - **If many students finish:**
 - Conduct a **class discussion** using the **case study:**
[“Shrub-Steppe Birds of Kittitas County”](#)
(teacher will print and summarize)
 - **If few students finish:**
 - Continue food web work.
 - Provide **extension reading on land bridges** to early finishers.
 - Optional: Introduce a scientific tool or method used in ecology (e.g., wildlife tracking, drone mapping, camera traps).

Teacher Note: Consider preparing a short overview or diagram of how habitat fragmentation impacts species for the case study discussion.

4:15–5:00 PM | Reflection Circle + Parent Pickup

- **Objective:** Encourage students to process and express what they learned.
 - **Discussion Prompts:**
 - “What was something new you learned today?”
 - “What’s one thing you’re still curious about?”
 - “What would you do to protect the ecosystem if you were an ecologist?”
 - Open time for packing up, parent pick-up, and one-on-one student questions.
-

Materials Checklist

- Printed cards with trophic level organisms
- Poster board or whiteboard + markers
- Food web handouts (Kittitas County version)
- Colored pencils/markers
- Printed copy of case study (for teacher)
- Optional: Land bridge reading or ecology tool activity sheet

Build Your Own Food Web: Life in Kittitas County

Name: _____ Date: _____

Your Mission:

Create a **food web** using real plants and animals from the shrub-steppe ecosystem of **Kittitas County**. You'll learn how energy flows from the sun to top predators—and you'll get to design your own web of life!

Step 1: Get to Know the Players

Below are some organisms from different **trophic levels** (positions in the food chain). Choose **at least 3 producers, 3 primary consumers, 2 secondary consumers, and 1 tertiary consumer** for your food web.

Producers (They make their own food using sunlight)

Choose 3

- Sagebrush – *Artemisia tridentata*
- Bitterbrush – *Purshia tridentata*
- Rabbitbrush – *Chrysothamnus nauseosus*
- Bluebunch Wheatgrass – *Pseudoroegneria spicata*
- Lupine – *Lupinus spp.*
- Balsamoroot – *Balsamorhiza sagittata*

Primary Consumers (They eat plants)

Choose 3

- Mule Deer – *Odocoileus hemionus*
- Pygmy Rabbit – *Brachylagus idahoensis*
- Ground Squirrel – *Uroditellus spp.*
- Grasshopper – *Orthoptera*
- Sage Grouse – *Centrocercus urophasianus*

Secondary Consumers (They eat the herbivores)

Choose 2

- Bobcat – *Lynx rufus*
- Badger – *Taxidea taxus*
- Western Rattlesnake – *Crotalus oreganus*
- Weasel – *Mustela spp.*

Tertiary Consumers (Top predators)

Choose 1

- Cougar – *Puma concolor*
- Golden Eagle – *Aquila chrysaetos*
- Great Horned Owl – *Bubo virginianus*

Step 2: Plan Your Web

On the back of this sheet or on scratch paper, list the organisms you chose and draw arrows from **what gets eaten** → to **who eats it**.

 **Remember:** Arrows show the direction energy flows (from food to eater)!

Step 3: Draw Your Food Web!

On the next page (or use a big blank sheet), create your **Kittitas County Food Web**.

Tips for Drawing:

- ✓ Put the **producers at the bottom**.
- ✓ Stack the levels like a pyramid (herbivores above, then carnivores).
- ✓ Use **arrows** to show who eats whom.
- ✓ Label each organism with both its **common name and scientific name**.
- ✓ Be creative! Add colors, backgrounds, or fun facts.

Bonus Challenge (Optional):

Can you add one **omnivore** (an animal that eats both plants and animals) to your food web? Label it and show how it fits

 **Wrap-Up Questions (write your answers below):**

1. What would happen to your food web if sagebrush disappeared?
2. Why are producers so important in an ecosystem?
3. Which animal in your food web is most dependent on others for survival? Explain.

Breaking Up Nature: How Roads and Buildings Affect Wildlife


Have you ever driven down a highway and seen forests on both sides? It might seem like nature is all around, but something important is missing—connection.

Ecologists (scientists who study ecosystems) have a name for this problem: habitat fragmentation. That means when large natural areas—like forests, wetlands, or grasslands—are broken into smaller pieces by human activities. These activities include building roads, cities, and farms. The natural system gets chopped up, and that causes problems for the animals and plants that live there.

Imagine you're a deer, and your forest is cut in half by a highway. Now it's hard to find food, water, or other deer to start a family with. You might try to cross the road, but that's dangerous. Many animals are hurt or killed trying to cross roads. Some stop moving altogether, stuck in smaller spaces where it's harder to survive. When parts of an ecosystem can't work together anymore, the whole system becomes weaker.

So what can ecologists do?

 They track animals with GPS collars to learn how they move and where they get stuck.

 They design wildlife corridors, like special bridges or tunnels, that let animals safely cross roads and reconnect with other parts of their habitat.

 They collect data to understand which species are at risk and share that information with people who plan cities, roads, and parks.

By studying natural systems and how they change, ecologists help protect wildlife and keep ecosystems healthy—even in a world full of roads and people.

💬 Class Discussion Questions

1. Why is it a problem when habitats get broken into smaller pieces? Can you think of any examples near where we live?
2. What does it mean that nature is a "system"? How does one small change (like a road) affect the whole system?
3. What are some examples of how animals and plants depend on each other to survive?
4. How do wildlife corridors help solve the problem of habitat fragmentation? Do you think they are a good solution? Why or why not?
5. If you were an ecologist, what would you do to help solve the problem of habitat fragmentation in your community?
6. Can you think of any examples of Habitat Fragmentation in Kittitas County?

Primary Producers (10 cards)

Common Name	Scientific Name	Image
Sunflower	<i>Helianthus annuus</i>	
Oak tree	<i>Quercus spp.</i>	
Grass	<i>Poaceae family</i>	
Algae	<i>Chlorophyta</i>	
Cactus	<i>Cactaceae family</i>	
Fern	<i>Polypodiopsida</i>	
Pine tree	<i>Pinus spp.</i>	
Apple tree	<i>Malus domestica</i>	
Moss	<i>Bryophyta</i>	
Clover	<i>Trifolium spp.</i>	

Primary Consumers (10 cards)

Common Name	Scientific Name	Image
Rabbit	<i>Oryctolagus cuniculus</i>	
Deer	<i>Odocoileus spp.</i>	
Grasshopper	<i>Orthoptera</i>	
Cow	<i>Bos taurus</i>	
Caterpillar	<i>Lepidoptera larvae</i>	
Sheep	<i>Ovis aries</i>	
Goat	<i>Capra aegagrus</i>	
Mouse	<i>Mus musculus</i>	

Panda *Ailuropoda melanoleuca*

Koala *Phascolarctos cinereus*

Secondary Consumers (10 cards)

Common Name	Scientific Name	Image
Frog	<i>Anura order</i>	
Fox	<i>Vulpes vulpes</i>	
Snake	<i>Serpentes order</i>	
Owl	<i>Strigiformes order</i>	
Spider	<i>Araneae order</i>	
Skunk	<i>Mephitis mephitis</i>	
Raccoon	<i>Procyon lotor</i>	
Coyote	<i>Canis latrans</i>	
Lizard	<i>Squamata order</i>	
Toad	<i>Bufo family</i>	

Tertiary Consumers (10 cards)

Common Name	Scientific Name	Image
Eagle	<i>Aquila spp.</i>	
Shark	<i>Selachimorpha</i>	
Lion	<i>Panthera leo</i>	
Orca	<i>Orcinus orca</i>	
Polar Bear	<i>Ursus maritimus</i>	
Crocodile	<i>Crocodylus spp.</i>	

Hawk	<i>Accipitridae family</i>
Mountain Lion	<i>Puma concolor</i>
Great White Shark	<i>Carcharodon carcharias</i>
Human	<i>Homo sapiens</i>

KITTITAS ENVIRONMENTAL EDUCATION NETWORK'S

ECO-EXPLORERS CLUB



Join KEEN's new **EcoExplorers Club**—an exciting weekly adventure filled with outdoor science, environmental projects, and creative discovery. Aligned with WA State ESE Standards, this hands-on program builds real-world skills and nature connection.

6th-8th Grade After School Club!

- Get Outside w/ Hands-On Learning
- Build Future Eco Leaders
- Real Science & Team Projects
- Explore Local Parks
- Creative Adventures



SEPT-JUNE

**Wednesdays 1pm-5pm
@KEEN**

Register:

keen-ycic.org/ecoexplorers

Questions? 509-551-8807





City of Ellensburg Parks & Recreation Department 'Park Partnership Program'

Introduction

Each year the Ellensburg City Council designates .3% of the previous year's (April 1 – March 31) general sales tax revenue to provide matching funds to community groups wishing to make capital improvements at City parks, trails, open space and recreational facilities. This year the 'Park Partnership Program' will have a total of \$22,225.94 (twenty-two thousand two hundred and twenty-five dollars and ninety-four cents) available for projects.

Goals

- To improve or increase park, open space, wildlife habitat, and recreational opportunities for the general public through capital improvement projects, including the purchase of equipment.
- Foster public initiative and participation in developing City parks and recreational facilities.
- Enhance the quality of life in Ellensburg.

Program Guidelines

Eligible Applicants: Service and civic groups, athletic/sports organizations, neighborhood park user groups and non-profit organizations. Partnerships among individuals and/or groups will also be considered.

Eligible Sites: City owned, leased or controlled parks, trails, open space and recreational facilities used by the general public have first priority. Facilities and amenities may serve passive, active, or special interest recreation activities.

Project Time Line

Application Due Dates: Applications must be submitted by 5:00pm on August 29, 2025. Applications shall be submitted to the Parks & Recreation Department Administrative Office, located on the 2nd floor of City Hall, 501 N Anderson, Ellensburg, WA 98926, or emailed to caseb@ellensburgwa.gov.

Award Decisions: Award decisions will be made by City Council at a regularly scheduled November Council meeting. A contract will be executed to outline the specific conditions of the project if awarded.

Project Time Limit: All projects must be completed within 12 (twelve) months of award, however an extension may be granted through approval of the Parks & Recreation Commission.

Project Evaluation

Written applications will be reviewed by the Parks & Recreation Director to determine eligibility. All eligible projects will be forwarded to the Parks & Recreation Commission to be scored by a rating system with the highest-ranking projects moving onto an oral presentation with the Commission.

Project Eligibility

1. Projects must be located on publicly owned property to be eligible.
2. Projects should be in conformance to any applicable master plan.
3. Public bid laws may be applicable for purchases made by the applicant. Please contact the City Parks & Recreation Director, or his/her designee, to determine if public bid law applies to your project.
4. Indoor and outdoor recreational facilities are eligible for partnership funding.
5. Park Partnership applicants are required to provide match for each dollar requested. Match may consist of cash, donated labor, donated materials, use of construction equipment, or architectural/landscape design services.
 - a. Volunteer labor is valued at \$34.79, a rate set by the Independent Sector ([Value of Volunteer Time Report | Independent Sector Resources](#))
 - b. Equipment donations will be valued at the price the equipment would be rented for per hour.
 - c. Donated professional services will be valued at the “reasonable and customary” rate.
 - d. The applicant may not use City staff time as match or request City staff to perform any work associated with the project other than what would be considered routine park work (example; park staff would go out and mark sprinkler heads for a project however park staff will not relocate sprinkler lines to accommodate a project – the project applicant would need to hire a company to perform that work).

Applicant Responsibilities

Applicants are required to present their project to the Parks & Recreation Commission at the Commission’s regularly scheduled September and/or October meeting.

Commission meetings take place the second Wednesday of month at 5:30 pm in the Council Conference Room, located on the first floor of Ellensburg City Hall, or remotely.

Presentations are limited to 10 (ten) minutes and must address the following subject matter:

1. Please explain the public benefits of the project.
2. Give an overview of the project's design and budget.
3. Describe ease of project maintenance and on-going operation.
4. Provide evidence this project has demonstrated support from the neighborhood or user groups.
5. Provide evidence the project is in an appropriate location concerning neighborhood impacts, access, environmental impacts, and proximity to potential facility users.

The Commission will then have up to 5 (five) minutes to ask the applicant questions about their project. Please note that the Commission will be given copies of your project application in advance of the meeting. The Commission will make a funding recommendation to the City Council. The application becomes invalid if the applicant or designated representative is not present at the Commission meeting to present their project. Applicants may be asked to present their project to the City Council.

Applicant Instructions

Applications Packets include the following:

Project Description: This form describes the project location, a brief description, contact person information, and project costs.

Work Plan: List the specific steps you will take to complete this project. Next to each step identify who will be responsible for the activity and the estimated date of completion.

Budget Plan: List each resource and quantity needed to complete your project. Calculate the total cost for each resource including tax. Next, breakdown the total cost of each resource by how much is applicant "in-kind", applicant cash, and how much of the City's match (if any) you will spend on this project.

Match Pledged: This form is provided to help solicit and gather match pledges. Applicant match can be pledged or secured at the time of application. Pledged means that the donor has made a verbal promise to provide the match item; secured means that the donor has signed the application's Match Pledge/Secured Form to confirm the commitment.

City of Ellensburg Parks & Recreation Department
'Park Partnership Program'
Project Description

Project Information

Project Name: Poolside Safety & Storage Improvement Project

Description of the project: The Ellensburg Area Swim Team is requesting support to add secure storage at the city pool. This project will increase available deck space, reduce clutter, and create a safer environment for swimmers, coaches, and community members. By improving organization and accessibility, the upgrades will benefit all users of the pool and enhance the overall quality of the facility.

Project Location (if located within a park facility please be specific):
Ellensburg City Pool

Contact Person

Name: Natalie Mayfield
Organization Representing: Ellensburg Area Swim Team (EAST)
Contact Address: 110 W. 6th Ave.
City/State/Zip: Ellensburg, WA 98926
Phone: (714) 686-6898
E-mail: east.swimteam.treasurer@gmail.com

Project Cost

Amount Requested from the City: \$ 4,420
Cash Amount from Applicant: \$ 3,759
"In-Kind" Amount from Applicant: \$ 661
Cash from other Sources: \$
Please list other sources:
Total Project Cost: \$ 8,840

Return completed Application or email to caseb@ellensburgwa.gov:

City of Ellensburg Parks & Recreation Administrative Office
501 N Anderson
Ellensburg, WA 98926
Due Date: August 29, 2025

City of Ellensburg Parks & Recreation Department
 'Parks Partnership Program'
Work Plan

Action Item	Responsible Party	Start Date	Completion Date
Storage Shed	EAST President	Jan 2026	Apr 2026
<i>includes ordering, assembling, and installing shed; timeline is weather dependent</i>			
Clocks	EAST President	Jan 2026	Feb 2026
<i>includes ordering and installing 3 pacing clocks</i>			
Bins and Shelves	EAST Pres and Coach	Jan 2026	Feb 2026
<i>includes ordering and assembling shelves, and ordering bins, cutting and sanding bins to fit finds, and then organizing all existing equipment into the new bins</i>			
Display Case	EAST Coach	Jan 2026	Jun 2026
<i>includes coordinating with Jodi at the pool and the repair person; includes purchasing materials for the repair of the display case</i>			

City of Ellensburg Parks & Recreation Department
 'Park Partnership Program'
Budget Plan

1. Personnel				
Description	Total Cost	Applicant "In-Kind"	Applicant Cash	City's Cash Match
Rebuild display case	\$1000		\$500	\$500
Sub Total	\$ 1000	\$	\$ 500	\$ 500

2. Supplies / Equipment / Materials				
Description	Total Cost	Applicant "In-Kind"	Applicant Cash	City's Cash Match
Storage Shed	\$2900	\$348	\$1102	\$1450
Display Case	\$2000		\$1000	\$1000
Pace Clock	\$700	\$35	\$315	\$350
Digital Pace Clocks	\$1760	\$70	\$810	\$880
Fin Bins	\$280	\$139	\$1	\$140
Fin Bin Racks	\$200	\$70	\$30	\$100
Sub Total	\$ 7840	\$ 662	\$ 3258	\$ 3920

3. Professional Services				
Description	Total Cost	Applicant "In-Kind"	Applicant Cash	City's Cash Match
Sub Total	\$	\$	\$	\$

4. Construction Capital				
Description	Total Cost	Applicant "In-Kind"	Applicant Cash	City's Cash Match
Sub Total	\$	\$	\$	\$

Project Total	Total Cost	Applicant "In-Kind"	Applicant Cash	City's Cash Match
	\$8840	\$661	\$3759	\$4420

note: EAST's In-Kind donations consist of volunteer hours calculated at \$34.79/hr

Notification Process

A call for projects will be published in the Daily Record, the City's official newspaper. A call for projects will run on the City's website (www.ellensburgwa.gov).



City of Ellensburg Parks & Recreation Department 'Park Partnership Program'

Introduction

Each year the Ellensburg City Council designates .3% of the previous year's (April 1 – March 31) general sales tax revenue to provide matching funds to community groups wishing to make capital improvements at City parks, trails, open space and recreational facilities. This year the 'Park Partnership Program' will have a total of \$22,225.94 (twenty-two thousand two hundred and twenty-five dollars and ninety-four cents) available for projects.

Goals

- To improve or increase park, open space, wildlife habitat, and recreational opportunities for the general public through capital improvement projects, including the purchase of equipment.
- Foster public initiative and participation in developing City parks and recreational facilities.
- Enhance the quality of life in Ellensburg.

Program Guidelines

Eligible Applicants: Service and civic groups, athletic/sports organizations, neighborhood park user groups and non-profit organizations. Partnerships among individuals and/or groups will also be considered.

Eligible Sites: City owned, leased or controlled parks, trails, open space and recreational facilities used by the general public have first priority. Facilities and amenities may serve passive, active, or special interest recreation activities.

Project Time Line

Application Due Dates: Applications must be submitted by 5:00pm on August 29, 2025. Applications shall be submitted to the Parks & Recreation Department Administrative Office, located on the 2nd floor of City Hall, 501 N Anderson, Ellensburg, WA 98926, or emailed to caseb@ellensburgwa.gov.

Award Decisions: Award decisions will be made by City Council at a regularly scheduled November Council meeting. A contract will be executed to outline the specific conditions of the project if awarded.

Project Time Limit: All projects must be completed within 12 (twelve) months of award, however an extension may be granted through approval of the Parks & Recreation Commission.

Project Evaluation

Written applications will be reviewed by the Parks & Recreation Director to determine eligibility. All eligible projects will be forwarded to the Parks & Recreation Commission to be scored by a rating system with the highest-ranking projects moving onto an oral presentation with the Commission.

Project Eligibility

1. Projects must be located on publicly owned property to be eligible.
2. Projects should be in conformance to any applicable master plan.
3. Public bid laws may be applicable for purchases made by the applicant. Please contact the City Parks & Recreation Director, or his/her designee, to determine if public bid law applies to your project.
4. Indoor and outdoor recreational facilities are eligible for partnership funding.
5. Park Partnership applicants are required to provide match for each dollar requested. Match may consist of cash, donated labor, donated materials, use of construction equipment, or architectural/landscape design services.
 - a. Volunteer labor is valued at \$34.79, a rate set by the Independent Sector ([Value of Volunteer Time Report | Independent Sector Resources](#))
 - b. Equipment donations will be valued at the price the equipment would be rented for per hour.
 - c. Donated professional services will be valued at the “reasonable and customary” rate.
 - d. The applicant may not use City staff time as match or request City staff to perform any work associated with the project other than what would be considered routine park work (example; park staff would go out and mark sprinkler heads for a project however park staff will not relocate sprinkler lines to accommodate a project – the project applicant would need to hire a company to perform that work).

Applicant Responsibilities

Applicants are required to present their project to the Parks & Recreation Commission at the Commission’s regularly scheduled September and/or October meeting.

Commission meetings take place the second Wednesday of month at 5:30 pm in the Council Conference Room, located on the first floor of Ellensburg City Hall, or remotely.

Presentations are limited to 10 (ten) minutes and must address the following subject matter:

1. Please explain the public benefits of the project.
2. Give an overview of the project's design and budget.
3. Describe ease of project maintenance and on-going operation.
4. Provide evidence this project has demonstrated support from the neighborhood or user groups.
5. Provide evidence the project is in an appropriate location concerning neighborhood impacts, access, environmental impacts, and proximity to potential facility users.

The Commission will then have up to 5 (five) minutes to ask the applicant questions about their project. Please note that the Commission will be given copies of your project application in advance of the meeting. The Commission will make a funding recommendation to the City Council. The application becomes invalid if the applicant or designated representative is not present at the Commission meeting to present their project. Applicants may be asked to present their project to the City Council.

Applicant Instructions

Applications Packets include the following:

Project Description: This form describes the project location, a brief description, contact person information, and project costs.

Work Plan: List the specific steps you will take to complete this project. Next to each step identify who will be responsible for the activity and the estimated date of completion.

Budget Plan: List each resource and quantity needed to complete your project. Calculate the total cost for each resource including tax. Next, breakdown the total cost of each resource by how much is applicant "in-kind", applicant cash, and how much of the City's match (if any) you will spend on this project.

Match Pledged: This form is provided to help solicit and gather match pledges. Applicant matches can be pledged or secured at the time of application. Pledged means that the donor has made a verbal promise to provide the match item; secured means that the donor has signed the application's Match Pledge/Secured Form to confirm the commitment.

City of Ellensburg Parks & Recreation Department 'Park Partnership Program'

Project Description

Project Information

Project Name:

Building the First Phase of a Miniature Riding Railroad Historical and Educational Adventure

Description of the project:

When the plan to build a miniature riding railroad at the Kittitas County Fairgrounds did not materialize, the group of railroad enthusiasts, although initially disappointed, began looking for another site. With the encouragement of Ellensburg City and Kittitas County contacts who voiced strong support for the idea, an undeveloped portion of Rotary Park was suggested as a possible site. With the prospect of a larger dedicated piece of land, group thinking rapidly progressed to a much broader perspective than a ride on a small train. The Kittitas County Railroad History Association (KCRHA) was formed with a group of 10 variously qualified directors. 501(c)3 status was obtained in August of 2024. KCRHA now envisions a train ride highlighting aspects of railroad history in the county with information kiosks and boards. In addition, there will be educational displays about safety around railroads and trespassing on railroad property. We envision activities such as school field trips and a train ride to see Santa Claus. Active BNSF engineers are eager to teach basic railroad operating rules and radio procedures to young people. Walking paths will course through the displays and connect with the Rotary Park-River Front Park trail system.

The overall project has a budget of around \$400,000 over a 5–10-year period. Speed of development is largely dependent on our ability to obtain funding. Currently funds are being raised for what has been labeled phase one, which is constructing 2800 feet of track and some basic infrastructure. This will also demonstrate progress to larger granting organizations as we seek additional funding. The SEPA process, which must be completed before an agreement can be executed with the city, is in process. The comment period has ended, and a decision is expected soon.

For calendar 2026, we are initially seeking funds for laying an out-and-back loop of track. (See appendix 2) Board members and friends of KCRHA are donating use of their personal engines and riding cars to get the railroad running. The initial train will have an engine at each end and will not have to be reversed before another trip around the track. Once the track is in place, we will be able to provide limited public rides, hopefully by late summer 2026. There will be no charge for a ride, but we envision two donation boxes. One will be for support of the railroad, and the other will be for a local charity such as the Foodbank.

While the improvements that KCRHA makes to Rotary Park will be owned by the city, the project requires special skills and knowledge to keep it operating. In addition to a motivated board, we have a broad base of volunteers of all ages who are eager to help build and operate the railroad. Also, at our booth at a recent Kittitas County fair, over 500 people took time to fill out a survey about a miniature railroad. Over 300 gave their contact information and expressed willingness to support such a project. Many said they were willing to help with construction, including owners of companies with the special skills we will need during construction.

The initial step in laying track is grading. Overall, the site has a very favorable natural grade except for one area that requires about 500 yards of fill. We are very fortunate to have the WinCo construction site next to the park. The construction superintendent is very interested in our project

and in addition, has introduced us to subcontractors who also have been helpful and generous. Terracon, the geotechnical company for the WinCo project, has given us advice and helped filing the SEPA forms pro bono. WinCo and Tieton Electric have the necessary fill material available on their site and will move it to our site at no cost as soon as our agreement with the city is signed. It is highly desirable to have the fill material settle over this winter before final grading in the Spring of 2026. WinCo has also offered to help with grading. Appendix 1 illustrates how the track will be laid. Many of the board members and people with high interest in this project are members of Train Mountain in Chiloquin Oregon, which is the largest hobby railroad in the world. We have learned many skills from the folks there.

The track for phase one will be built off site in 10-foot-long sections and set in place after grading is complete. Final ballasting and alignment follow before the track is usable. This request addresses only track laying aspects of the first phase. Of note is that we planned to use aluminum rail because steel rail was more expensive. However, that price point may change in the current market because of tariffs on imported aluminum. This price change may result in an increase in cost of the project.

The appended narrative provides more details of the overall project.

Project Location (if located within a park facility please be specific):

The railroad will be built on the undeveloped south side of Rotary Park. The initial lollipop shape will hug the south border of the park along the boundary with the WinCo property. As the project matures, it will expand North and West into the available undeveloped space. A track turnaround space in the Southeast corner is highly desirable for our ultimate operating plan. We could share parking space with the planned community center and receive our guests in that corner of the layout.

Appendix 1 is a more detailed narrative of the whole project

Contact Person

Name: Jim Pendley, CEO

Organization Representing: Kittitas County Railroad History Association (KCRHA)

Contact Address: 2130 Killmore Road,

City/State/Zip: Ellensburg, WA 98926-7841

Phone: 509-929-0316

E-mail: kcrailroadhistory@gmail.com

Project Cost

Amount Requested from the City: \$10,000

Cash Amount from Applicant: \$21,850

"In-Kind" Amount from Applicant: \$24,720

Cash from other Sources:

Please list other sources

Total Project Cost: \$56,570

Return completed Application or email to caseb@ellensburgwa.gov:

City of Ellensburg Parks & Recreation Administrative Office
501 N Anderson
Ellensburg, WA 98926
Due Date: August 29, 2025

City of Ellensburg Parks & Recreation Department
'Parks Partnership Program'
Work Plan

Action Item	Responsible Party	Start Date	Completion Date
Begin building 10 ft track panels off site	KCHRA	Dec 1 2025	Jul 31 2026
Begin sod removal on fill area approx. 60'x400'. Bring in fill dirt	KCRHA, Terracon, Advantage Dirt	Oct 1 2025	Oct 31 2025
Begin sod removal for phase 1 track	KCRHA	Mar 15 2026	Jun 1 2026
Begin final grading and Leveling over fill	KCRHA	Apr 15 2026	Jun 1 2026
Begin laying 2" -3" sub ballast	KCRHA	Apr 15 2026	Jun 1 2026
Begin installing Track panels	KCRHA	May 1 2026	Jul 15 2026
Begin final ballast with surface and lining of track	KCRHA	Jun 1 2026	Aug 15 2026
Operate first train	KCRHA	Aug 22 2026	Sep 30 2026

City of Ellensburg Parks & Recreation Department
 'Park Partnership Program'
Budget Plan

1. Personnel				
Description	Total Cost	Applicant "In-Kind"	Applicant Cash	City's Cash Match
KCRHA volunteers	380 HRS X 34.79 \$13,220	\$13,220		
Sub Total	\$13,220	\$13,220	\$0	\$0

At this point, no other personnel costs are expected.

2. Supplies / Equipment / Materials				
Description	Total Cost	Applicant "In-Kind"	Applicant Cash	City's Cash Match
Use of 2 locomotives For 80 hrs @\$100 hr	\$8,000	\$8,000	0	0
Use of 7 train cars Avg 70 hrs @\$50 hr	\$3,500	\$3,500	0	0
Battery chargers	\$450	0	\$450	0
Gas Generator	\$500	0	\$500	0
Shovels, rakes, track alignment tools	1,000	0	\$1000	0
Sub Total	\$13,450	\$11,500	\$1,950	\$0

3. Professional Services				
Description	Total Cost	Applicant "In-Kind"	Applicant Cash	City's Cash Match
Sub Total	\$	\$	\$	\$

Currently, no fees for professional services are anticipated in relation to this application. We are receiving numerous pro bono services.

4. Construction Capital				
Description	Total Cost	Applicant "In-Kind"	Applicant Cash	City's Cash Match
Sod cutter rental	\$1,800	0	\$1,800	0
1" aluminum rail 6000 feet	\$9,920	0	\$4,920	\$5,000
Railroad ties	\$11,256	0	\$6,256	\$5,000
Track hardware, joint bars, bolts, nuts	\$4,124	0	\$4,124	0
Track ballast 8 loads @ \$350 per load	\$2,800	0	\$2,800	0
Sub Total	\$29,900	\$0	\$19,900	\$10,000

Project Total	Total Cost	Applicant "In-Kind"	Applicant Cash	City's Cash Match
	\$56,570	\$24,720	\$21,850	\$10,000

Notes to budget:

KCRHA is also applying to the Ellensburg Council Community Grants program for \$10,000. These numbers do not reflect a positive response from that application. A positive response from the council program would reduce the applicant cash total shown on this application.

Since obtaining our 501(c) 3 status last summer, KCHRA has received over \$30,000 in board member and individual contributions. We have received funds from Love's foundation, the Bank of Montreal, and Creekside Dental. A \$2500 grant has been received from the National Railway Historical Society. We see that award as validation of our plan by an influential national organization.

The BNSF railway foundation has considered our large grant request, but because of recent budget austerity due to the current economic climate, they are not awarding grants this year. We have been invited to apply again in the first quarter of 2026. We look for the foundation to be a long-term partner in this effort when the railroad economic outlook is stable again. Grants are awarded on an annual basis.

Currently, our balance sheet has over \$30,670 in uncommitted funds. We continue to search for and apply for grants to support the project. If desired, we will supply detailed financial information.

Appendices

1. More detailed narrative of the whole project.
2. Track plan-phase 1 in red

7 ½” Gauge Railroad at Rotary Park

Narrative

June 7, 2025

Project Overview:

The Kittitas County Railroad History Association (KCRHA) plans to construct a 7 ½” gauge riding railroad designed for family enjoyment and educational enrichment. This popular gauge, widely used by railroad clubs across the country, offers safe and engaging outdoor fun and is utilized across the country for year-round operation.

- **Gauge:** 7 ½” (1/8th scale) — the most popular for outdoor miniature railroads
- **Operating Season:** May through September (outdoor rides)
- **Location:** Ellensburg Rotary Park

Year-Round Engagement:

Though train rides will primarily operate during the warmer months, our vision extends into the winter through the development of a dedicated **Operations Center**. This indoor facility will host a variety of activities including:

- **Construction** and display of 1/8th scale buildings, structures, and trains
- **Volunteer training** on railroad equipment, operations, and radio communication rules
- **Educational presentations and videos** for the public
- **Community workshops and events** related to model railroading and railroad history

Construction Safety & Standards:

KCRHA commits to ensure that every phase of construction, maintenance, and operation is conducted with high regard for safety. We will work with local officials to meet applicable safety regulations and practices.

Track Construction:

Phase one of the project will build approximately 2800 ft of railroad by experienced personnel using well proven and current best practice using plastic molded “Accu-ties” brand cross ties (Made by Accu-tie Rail System of Kent OH). These ties accurately maintain gauge and hold rails under high use for many years of service. Rail can be either aluminum or steel, pre-bent for the desired radius before installation. The track is built in 10ft sections curved and straight. 10ft sections can be removed for various reasons like infrastructure additions and then re-laid back to their prior placement.

Track installation:

Ground preparation will start with removal of all sod and organic material down to the surface of undisturbed soil approximately 24” wide for track main line and passing sidings. Industrial spur tracks (no passenger trains) will have (16” wide) sod removed. All tracks next to each other will have a minimum of 5 ft center to center separation.

One fill is required on the Phase One track plan. It is wide enough to include space for Phase two tracks for the fill location. See drawing below.

It is anticipated that a maximum fill of 17” high will be needed. This is the only fill needed at this time. The area needing fill is approximately 400 ft in length. The fill material will be from the WinCo site. Compaction of the fill will meet the engineer’s requirements.

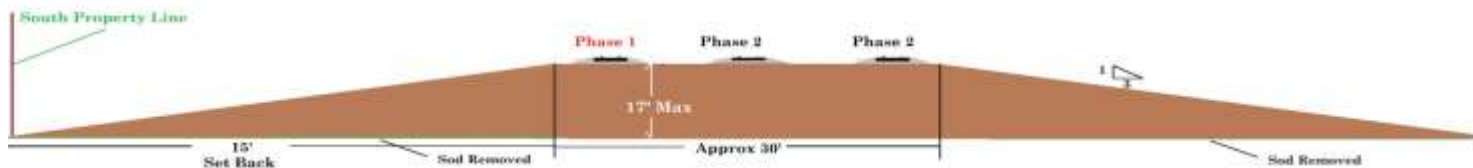
With the type of soil found at the site, the fill dimensions planned are maximum height of 17” with a

level 30 ft width at the top sloping down on a 3 to 1 rate on both sides. The slope will meet the engineer's recommendations. See drawing below.

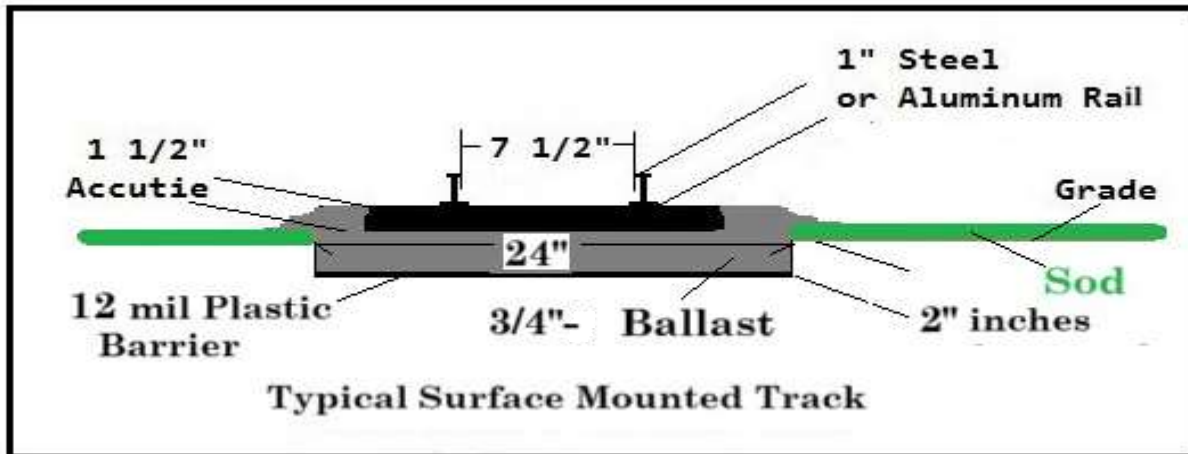
"NOTE" all drawings in this narrative are not to scale

Fill diagram for 7 1/2" Gauge Track (See Phase 1 Track Plan)

Drawing not to Scale



The area to be filled is located on the Track Plan for Phase One (attached)



The surface will be prepared to keep the grade close to 0%. A plastic vapor barrier of 12 mil is laid where the sod was removed for all tracks including industrial spur tracks. For the fill, 12 mil plastic is only under the ballasted area. See above.

Applying the ballast:

Ballast of choice will be 3/4 crushed gravel or similar. 3" of sub ballast will be applied and leveled. Ballast will be hand tamped using a 12"x 12" x 1/4" steel plate maintaining level.

Installing prebuilt 10 ft track panels:

1" aluminum rail will be used for prebuilt track panels. Straight and curved track panels will be laid and bolted together ensuring that each of the rail ends are separated by 1/4" to 3/8" gap for expansion at 80 degrees Fahrenheit standard. Rail joints will be either slip or slotted joint bars with bolts and nylon lock nuts.

Applying final top/finished ballast:

After track panels are in place and connected, track will be inspected for surface and lining. Final top ballast is then applied, carefully filling between the Accu-ties and side slopes at 45 degrees downward to initial grade or top of fill. Excess ballast is swept using a firm bristle broom. Ballast is not desired on top of the ties or on rail bases after final grooming.

The final surface and lining will use the transit and mirror technique.



Installation of Prebuilt 1/8th Scale Buildings and Structures:

Each 1/8th scale building will be a scale “stick-built” structure that is easily compared to a real full scale-built house. The same terminology applies -- framing, studs, plates, trusses, bearing walls, wall boards and wall coverings. Exterior and interior walls are all framed using scale 2 x 6 stud walls glued and nailed using air strike nail guns. No hammers are used.

All 1/8th scale buildings will be built to withstand the outside year-round elements with real building materials such as quality exterior house paint, real roofing/tar paper and real glass for windows. (Courtesy of Johnsons Auto Glass, Ellensburg)

Each scale building will be built with full size treated 2x4's nailed and glued under the framed area. See illustration below

One-quarter inch all-thread rods and nuts will connect the roof trusses to the bottom of the floors, ensuring a strong defense against high winds with several of these “tie rods” in place within each structure.

1:8 scale Ellensburg 1886 depot ready for display at Rotary Park

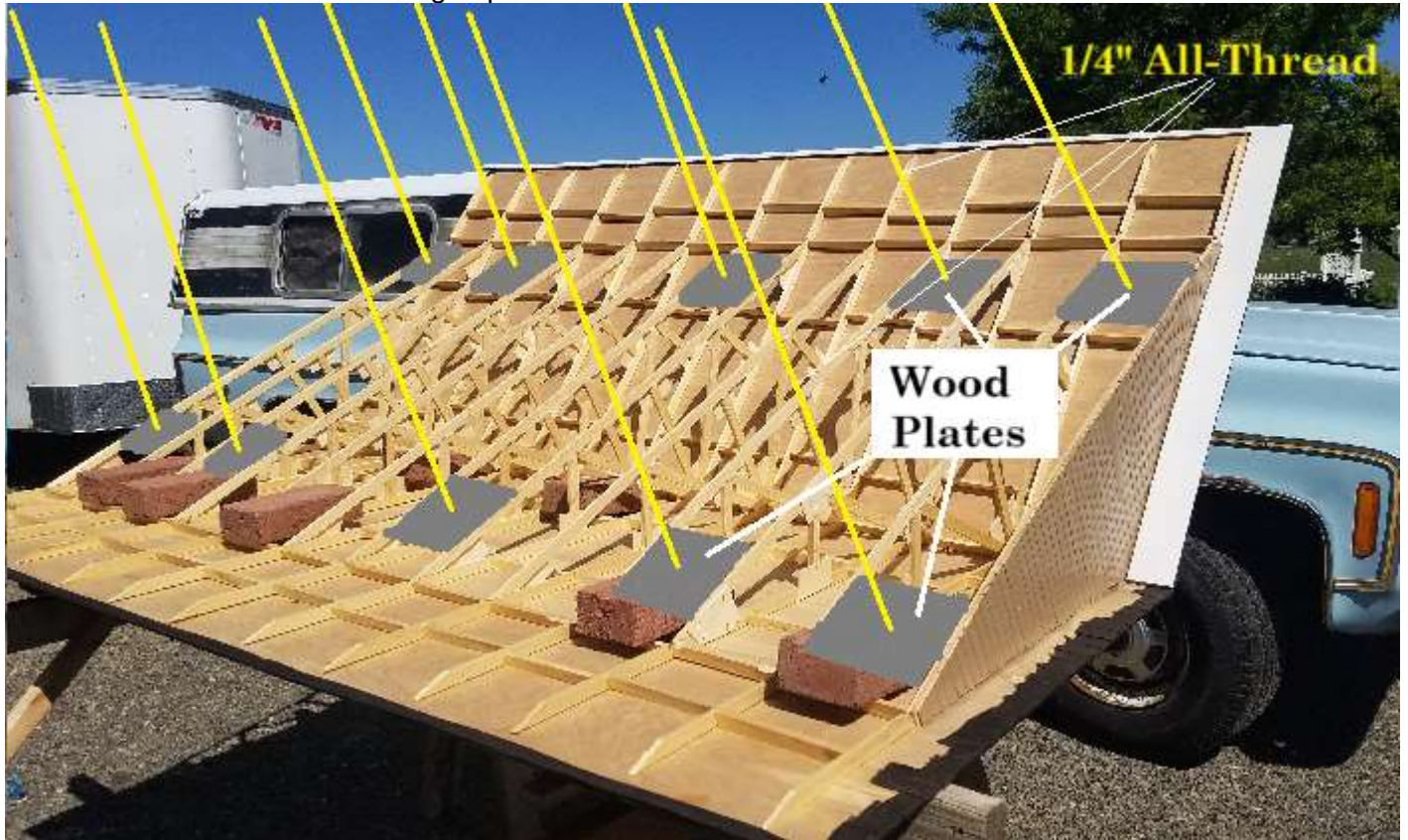


Photo during construction of 1:8 scale depot



Using a five-man team, the roof is carefully lowered, guiding each rod into a pre-drilled 3/8" hole in the floor. Each rod is then fastened with 1/4" fender washers and nuts to the underneath side of the floor.

Roof detail of 1:8 scale Ellensburg depot



After each building is complete and ready to set, it is lowered into prepared recessed trenches for each treated 2x4, and the floor of the building is set at the desired height.

Depots, being the closest buildings to the mainline track, will be set back 2.5' from the edge of the tracks. Industrial track sidings will have buildings next to the tracks for scale distance of simulated loading and unloading of rail cars.

Structures such as railroad water tanks will be set on a 4" concrete foundation anchored with concrete anchors. Water tanks will be designed to hold water for use in our live steam locomotives. Other structures will have a variety of different foundations, some with treated wood while others may have concrete pier blocks. All buildings and structures will be permanently secured for excessive wind. Interior low voltage lighting will be installed in some buildings. Some buildings and structures may be taken into the Operations Center for winter.

Locomotives:

The KCRHA has a variety of different powered locomotives including deep cycle batteries, propane/steam and gasoline available for use. Locomotives may weigh as little as 400 lbs. and up to 1500 lbs. Locomotives will only be operated by qualified personnel.



Most locomotives have headlights, horns or whistles and a bell. Our regular passenger locomotives have volume control with the sound system. AC power will be required for charging electric/battery powered locomotives. Temporary gasoline powered generators will need to be used until permanent AC power is available. Rules and requirements for storing gasoline and propane will be properly followed.

An engineered mechanical/electrical/hydraulic lifting apparatus will eventually be built for loading and unloading locomotives and rail cars from pickups and trailers.



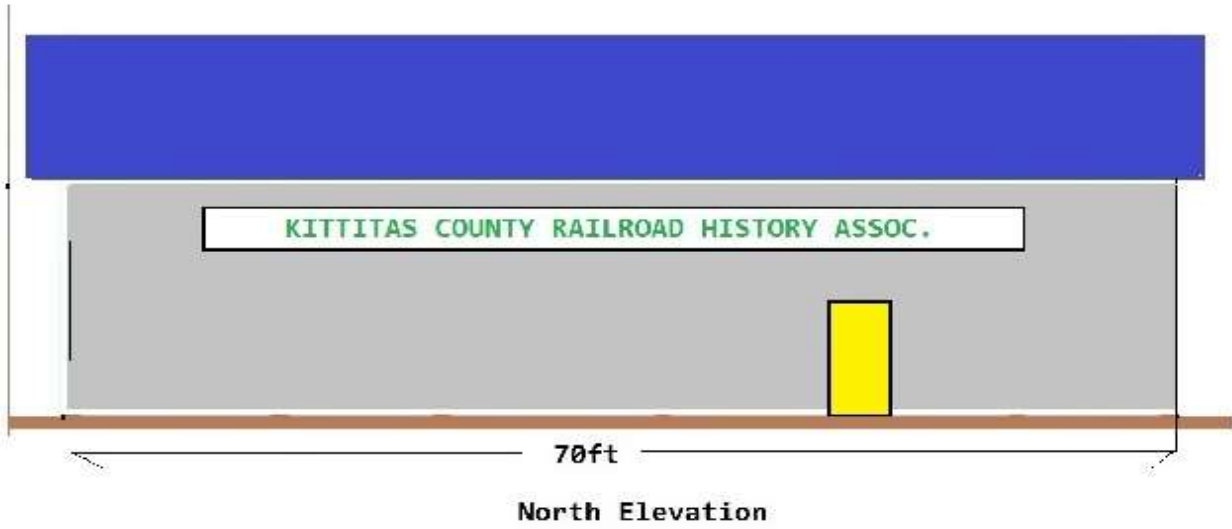
After Phase Two has begun, servicing pits for locomotives will be needed for locomotive maintenance. Planned are pits 16'x 8'x 3' deep with steps built with 4" concrete floor and 4" walls. One will be needed at the turntable at Ellensburg 1886 and one inside the Operations Center. Service Pits will have lockable metal covers when not in use.



Above is the servicing pit for Train Mountain, Chiloquin OR
Below is the servicing pit for Skykomish WA. These locomotives will be used at Rotary Park and are owned by KCRHA board members.

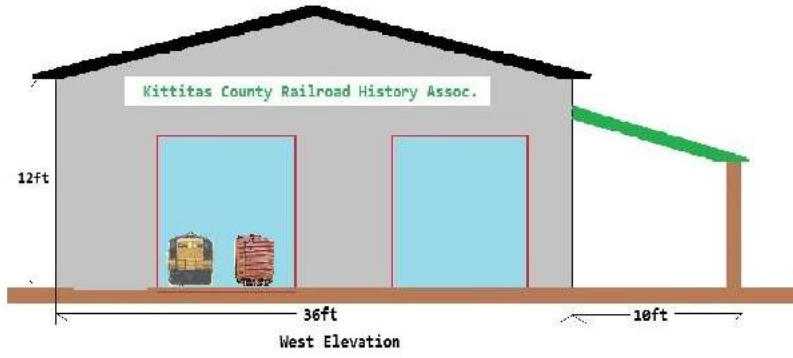


Operations Center 70' x 36'
With 10ft Overhang South Side



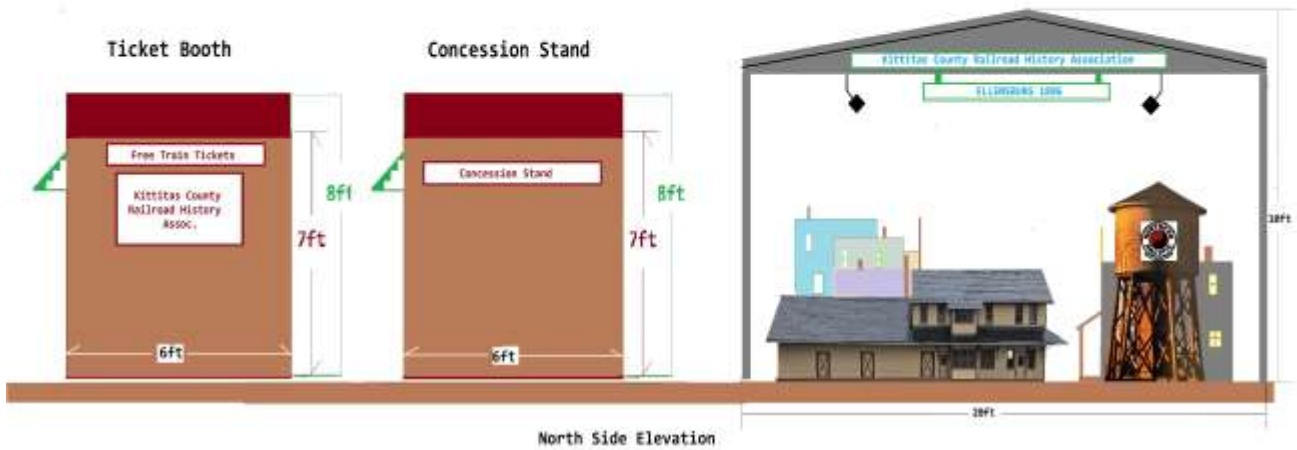
Operation Center at Cle Elum

Drawings not to scale



- Other Full Size Buildings: Phase 2
- One 20'x 30' metal roof only for Ellensburg 1886 Phase 1
- One 6'x 8' metal Concession Stand Phase 2
- One 6'x 8' metal Time Ticket Booth Phase 2
- Building permits submitted by contractor

North Elevation as seen from Parking Lot
Drawing not to Scale



Other Railroad Structures:

Also planned for Phase Two, and depending on funding, are two identical railroad bridges next to each other between Cle Elum and Easton. See attached Phase 2 track plan. Engineering will be needed for both bridges.

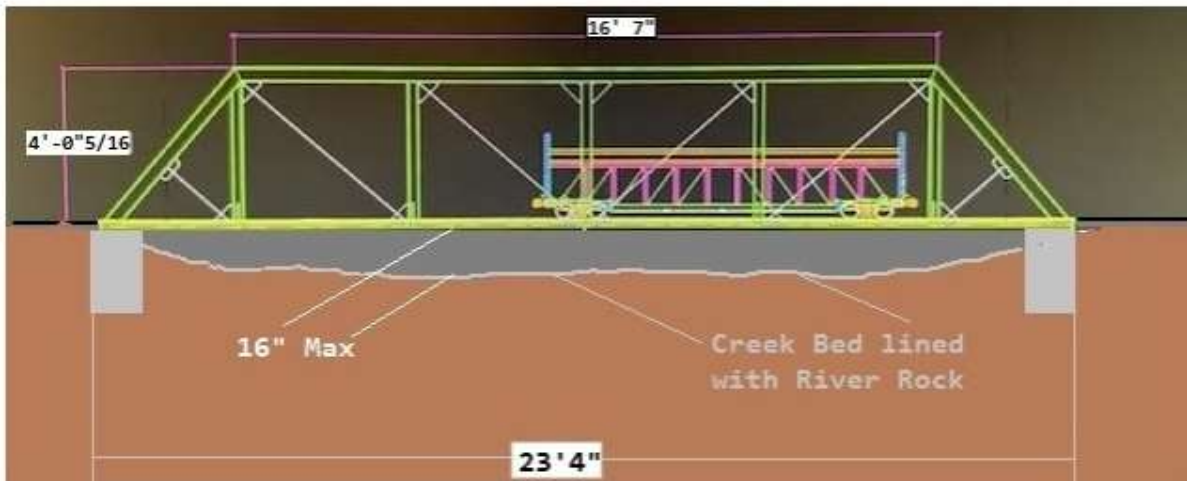
Steel Bridge

(Typical of two planned)

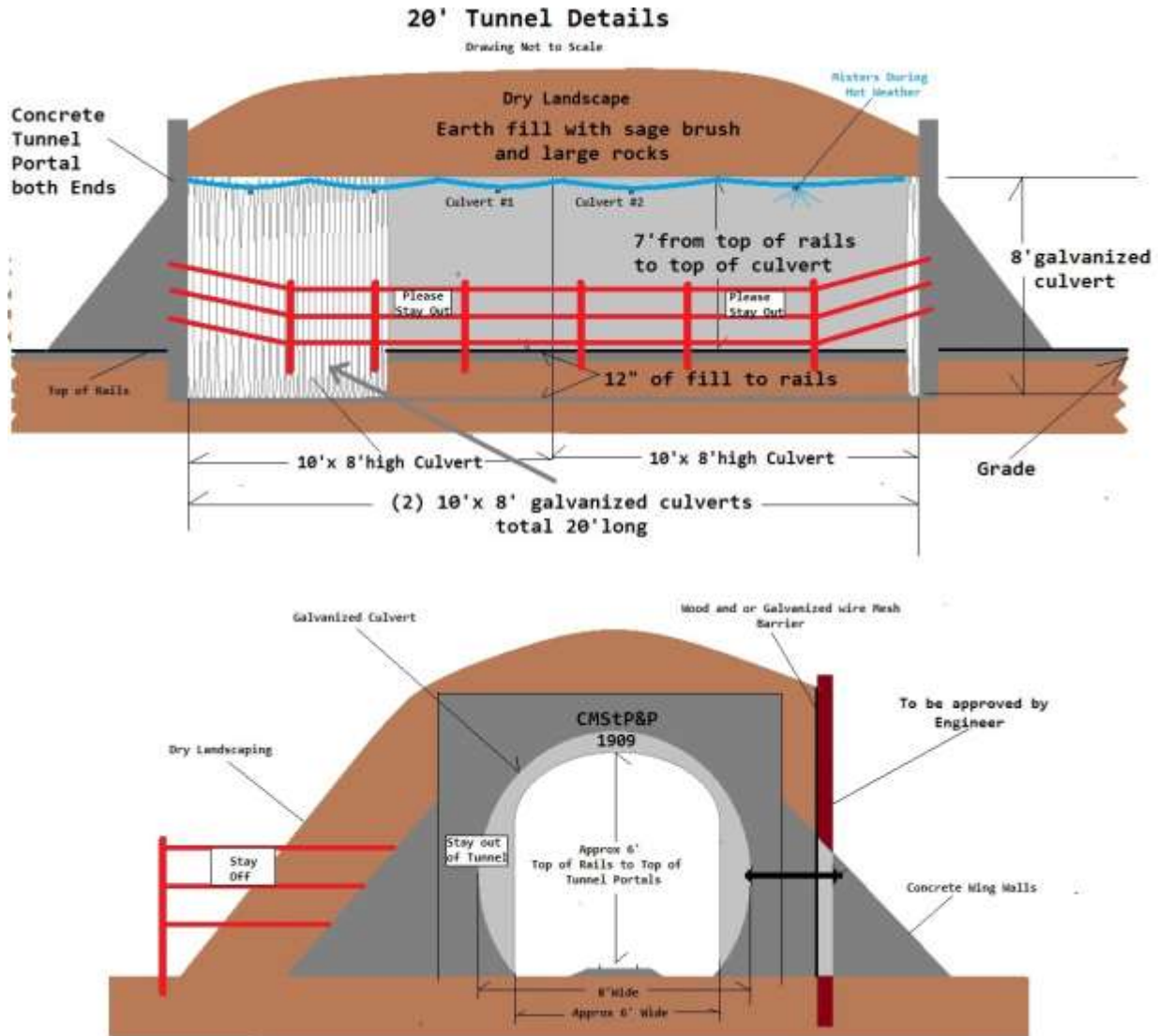
Trex decking for walkways
steel pipe for hand rails

Both bridges will have structural Engineers stamp of Approval

Dry Creek Bed



Additional structure for Phase Two depending on funding:
An above-ground railroad tunnel.



Passenger Riding Cars:

Each passenger riding car has a standard framework for 2,000 pounds payload with each truck having 1200 lb. capacity. All passenger cars have been built and tested locally many times. More riding cars, like the one below, are planned to be built in Yakima at PNW Design and Fab. All other rail/freight cars will be built at PNW Design and Fab as well.

Railroad riding Car construction drawings are available upon request

The Packard family on a KCRHA riding car.



Train Operations:

Train speed is a maximum of a fast-walking speed. Only one train will operate during Phase One. During Phase Two, strict operating rules and a Train Dispatcher will govern train movements when more than one train is in operation. Active and retired professional train engineers will provide all necessary training at that time. Safety is

Priority ONE!

Operating Hours:

The KCRHA would like to propose operating public train rides beginning late summer 2026 for Phase One if progress allows.

Our preliminary plan for operations in 2027 will be the 2nd and 4th weekends of May through September, operating only Saturdays 2 pm to 9 pm and Sundays 10 am to 4 pm. Also operating for only one day, the Saturday after Thanksgiving for a train ride to see Santa 10 am to 4 pm.

Public Amenities:

To begin with Phase One, five picnic tables, like the ones pictured below are planned. The KCRHA plans to locate these under the Ellensburg 1886 roof when the public is invited to ride our train in Phase One.



Landscaping:

Landscaping is desired throughout the project and will be budgeted for as funding allows.

Our general approach will be to start with keeping the property mowed. No landscaping is planned to be added in Phase One.

It has been recommended to the KCRHA by the Department of Fish and Wildlife to consider the Heritage Gardens program that Kittitas County Conservation District helps run and/or the use of other native trees and shrubs throughout the area. We will pursue this later.

At the west end of the project, the KCRHA desires to not remove any live trees. With the current track plan for Phase One, no living or dead trees will need to be removed.

The KCRHA plans to not enter the 100-year floodplain area during Phase One.

Fencing our Scale Buildings and Structures:

No fencing will be needed for Phase One.

Phase Two of the master plan for the railroad includes fencing necessary to protect structures and trains. The KCRHA hopes to work with the city of Ellensburg on the matter of fencing and work on solutions agreeable to both the KCRHA and the city. The KCRHA will budget as much as possible towards this necessity in phases as it is a high priority.

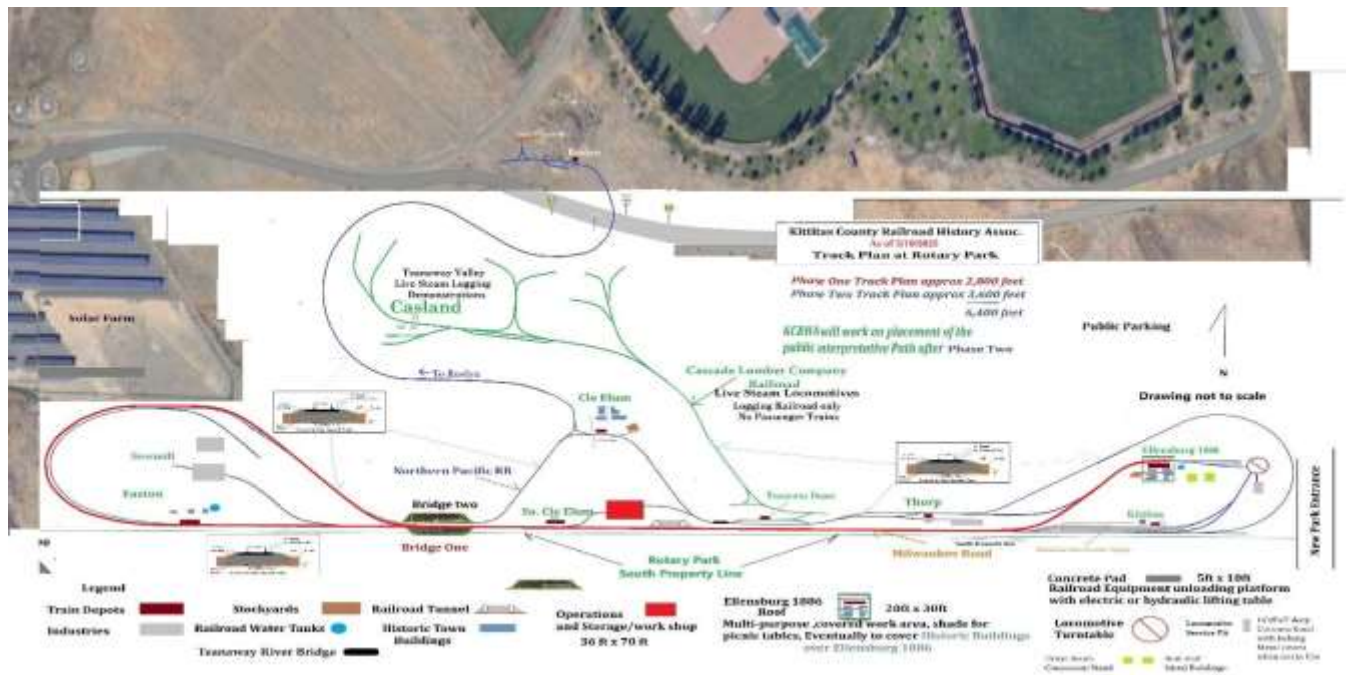
Public Educational/Interpretive Walking Path:

The KCRHA will work on the route and other details of this public path with the Parks and Recreation Department. It is very important to KCRHA to make this an educational, informative experience that adds to our vision. Our historical-based grants ask for historical information to be posted everywhere possible along this route. We want to provide as many resources/funding as we can to support this walk, and we will apply for grants to support this kind of experience.

For further information

Contact: Jim Pendley
CEO/ Kittitas County Railroad History Association
kcrrailroadhistory@gmail.com
kcrrailroadhistory.org
509 – 929 -0316

Appendix 2 Complete Project Track Plan with Phase One in Red



Notification Process

A call for projects will be published in the Daily Record, the City's official newspaper. A call for projects will run on the City's website (www.ellensburgwa.gov).

City of Ellensburg Parks & Recreation Department
'Park Partnership Program'
Project Description

Project Information

Project Name: *Kiwanis Park Slam Dunk Court*

Description of the project: *Replace existing basketball court with a slam dunk court.*

Project Location (if located within a park facility please be specific): *Kiwanis Park
Replace existing basketball court at current location.*

Contact Person

Name: *Grant Clark or Jerry Pettit*

Organization Representing: *Rodeo City Kiwanis*

Contact Address: *PO Box 254*

City/State/Zip: *Ellensburg, WA 98926*

Phone: *(509) 929-2280 or (509) 929-1591*
Grant Jerry

E-mail:

grant: lazloandlacey@charter.net
Jerry: sspranch@charter.net

Project Cost

Amount Requested from the City: \$ *14,350*

Cash Amount from Applicant: \$ *14,350*

"In-Kind" Amount from Applicant: \$

Cash from other Sources: \$

Please list other sources:

Total Project Cost: \$ *28,700*

Return completed Application or email to caseb@ci.ellensburg.wa.us:

City of Ellensburg Parks & Recreation Administrative Office
501 N Anderson
Ellensburg, WA 98926
Due Date: August 30, 2024

City of Ellensburg Parks & Recreation Department
 'Park Partnership Program'
 Budget Plan

1. Personnel				
Description	Total Cost	Applicant "In-Kind"	Applicant Cash	City's Cash Match
Central Parking	20,600		10,300	10,300
10% Contingency	2,600		1,300	1,300
Sub Total	\$ 23,200	\$	\$ 11,600	\$ 11,600

2. Supplies / Equipment / Materials				
Description	Total Cost	Applicant "In-Kind"	Applicant Cash	City's Cash Match
Basketball hoops	5,000		2,500	2,500
Contingency	500		250	250
Sub Total	\$ 5,500	\$	\$ 2,750	\$ 2,750

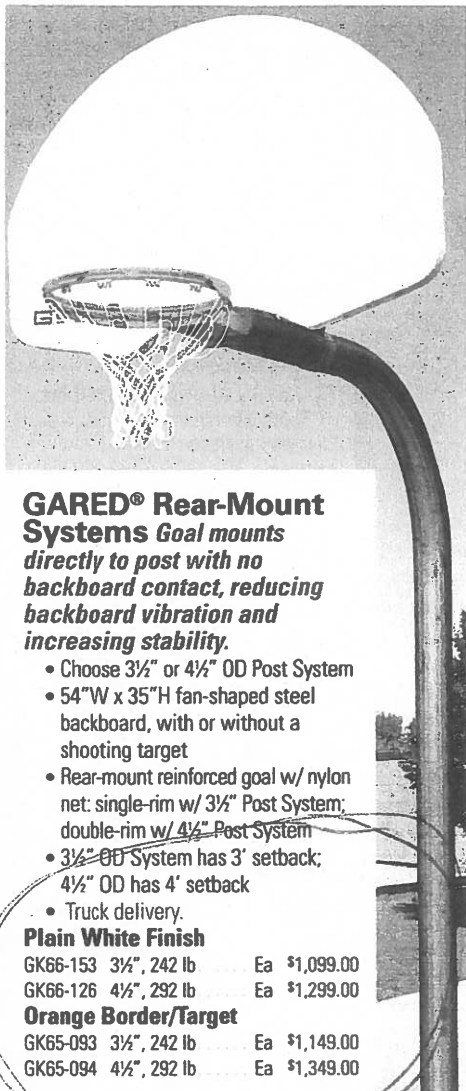
3. Professional Services				
Description	Total Cost	Applicant "In-Kind"	Applicant Cash	City's Cash Match
Sub Total	\$	\$	\$	\$

4. Construction Capital				
Description	Total Cost	Applicant "In-Kind"	Applicant Cash	City's Cash Match
Sub Total	\$	\$	\$	\$

Project Total	Total Cost	Applicant "In-Kind"	Applicant Cash	City's Cash Match
	28,700		14,350	14,350

Notification Process

A call for projects will be published in the Daily Record, the City's official newspaper. A call for projects will run on the City's website (www.ci.ellensburg.wa.us).



GARED® Rear-Mount Systems Goal mounts directly to post with no backboard contact, reducing backboard vibration and increasing stability.

- Choose 3½" or 4½" OD Post System
- 54"W x 35"H fan-shaped steel backboard, with or without a shooting target
- Rear-mount reinforced goal w/ nylon net: single-rim w/ 3½" Post System; double-rim w/ 4½" Post System
- 3½" OD System has 3' setback; 4½" OD has 4' setback
- Truck delivery.

Plain White Finish

GK66-153	3½", 242 lb	Ea	\$1,099.00
GK66-126	4½", 292 lb	Ea	\$1,299.00

Orange Border/Target

GK65-093	3½", 242 lb	Ea	\$1,149.00
GK65-094	4½", 292 lb	Ea	\$1,349.00



Bison® ZipCrank™ Adjustable Systems A compact system perfect for any space!

- 5" sq steel post with powder-coat finish
- 60"W x 36"H backboard with clear or smoked glass to eliminate reflection
- Aluminum-framed TruGlass tempered glass backboard for a truer rebound
- 2½' setback
- Adjusts with removable hand crank from 7'6" to 10'H
- Includes pole, post pad, backboard, breakaway goal, and net
- 325 lb
- Truck delivery.

Clear Glass

GK65-051	Ea	\$2,349.00
----------	----	------------

Smoked Glass

GK65-052	Ea	\$2,399.00
----------	----	------------



Bison® Ultimate Jr. Fixed-Height Playground System Rigid system for safe and competitive play!

- Rigid, 5" sq steel post to withstand years of tough use on playgrounds
- 60"W x 42"H powder-coated steel rectangular backboard with highly-visible orange shooter's square
- 3' setback allows for safe play under the goal
- Includes post, backboard, heavy-duty breakaway goal, and net
- 350 lb
- Truck delivery.

GK03-850	Ea	\$2,549.00
----------	----	------------

Post Padding



Lace-Up Post Pads

Durable 1½" thick padding protects players and looks great! Easily lace padding on the front of any 2"-6" dia gym or goal post. Nylon-reinforced vinyl over 1½" thick polyurethane foam pad with grommets.

	2"-4" dia Posts (14"W x 84"H)	4"-6" dia Posts (26"W x 84"H)
Red	GK66-733	GK65-008
Blue	GK66-325	GK65-009
Green	GK66-732	GK65-010
Yellow	GK66-730	GK65-011
Black	GK66-731	GK65-012
Price Ea	\$165.00	\$245.00

Bison® Post Pads Premium 5" padding is thicker than other pads for maximum protection!

Form-fitting foam is 72"H with weatherproof vinyl cover and hook-and-loop fastener closure. Fits 4-6" dia posts. Meets NCAA and NFHS specifications. Choose from 16 school colors. Custom lettering is available; contact your Regional Sales Representative.

GK62-292 Post Pad Specify color	Ea	\$619.00
GK65-006 Custom Post Pad	Ea	\$829.00

Scarlet	Forest Green	Purple
Purple	Black	Cardinal
Orange	Kelly Green	Navy
White/Gold	Maroon	Black/Orange
		Grey



Easy-to-adjust strap closure

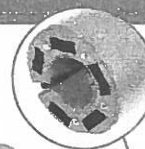
Hook-and-loop fastener connection

NEW G

Gopher Post Pad Stay safe with friendly yet durable padding!

3" polyurethane foam with 18 oz antimicrobial vinyl cover offers durability and player protection. Hook-and-loop fastener strap on 72"H pad makes attachment easy. Fits outdoor systems up to 4½" dia. Padding separates into 2 pieces via hook-and-loop fasteners for storage.

GK65-086	Ea	\$329.00
----------	----	----------



Project Description		2025	2026	2027	2028	2029	2030
1	Rotary Park Fieldhouse	\$ 25,000,000.00					
2	North Alder Street Park Sprayground	\$ 250,000.00					
3	IRRP Playground			\$ 200,000.00			
4	Kiwanis Park Skatepark Improvements	\$ 545,000.00					
5	Reed Park Improvements	\$ 200,000.00	\$ 200,000.00	\$ 200,000.00			
6	Community & Aquatic Center				\$50,000,000.00		
7	McElroy Park Improvements				\$30,000.00		
8	Pickleball Court Development (4)		\$110,000				
9	Rotary Park and Trail Development			\$ 500,000.00			\$ 5,000,000.00
10	New Park Acquisition					\$200,000.00	
11	Mt. View Park Multi Purpose Court Improvements		\$40,000.00				
12	Mt. View Park Tennis Court Development (8)	\$ 650,000.00					
13	Palouse to Cascades Reconnection Trail		\$825,000.00	\$75,000.00	\$200,000.00	\$500,000.00	\$300,000.00
14	Yakima River Trail			\$750,000.00			
15	Irene Rinehart Park Improvements						\$1,827,000.00
16	Kleinberg Park Improvements					\$17,000.00	
17	Mt. View Park Improvements						\$188,300
18	Paul Rogers Park Improvements		\$118,000.00				
19	South Main Entry Park Improvements						\$20,000
20	Veterans Memorial Park Improvements					\$401,000.00	
21	West Ellensburg Park Improvements					\$432,600.00	
22	Wipple Park Improvements	\$ 50,000.00					
23	Off Leash Park Phase II		\$10,000.00				
TOTALS		\$ 26,695,000.00	\$1,303,000.00	\$1,725,000.00	\$50,230,000.00	\$1,550,600.00	\$7,335,300.00